

**K19 G**

**Generator Drive**

**Sales Handbook**

## TABLE OF CONTENTS

Product Summary Page .....	7
Graphics and Text Section .....	8
AC - Air Cleaner .....	8
AD - Accessory Drive .....	12
AP - Certification Registries .....	14
CA - Air Cleaner Plumbing .....	21
CS - Starting Aids .....	23
DA - Vibration Damper .....	26
DC - Duty Cycle .....	28
EC - Engine Controls .....	30
EE - Alternator .....	38
EM - Front Engine Support .....	42
EP - Engine Instrument Panel .....	45
ES - Magnetic Switch .....	50
FA - Fan .....	51
FF - Fuel Filter .....	55
FH - Flywheel Housing .....	57
FN - Engine Fan .....	58
FO- Oil Fill .....	61
FP - Fuel Pump And Governor .....	62
FR - Power Rating .....	66
FS - Fuel System Accessories .....	72
FV - Fuel Shut-off Valve .....	76
FW - Flywheel .....	78
HD - Auxiliary Pump Drive .....	80
HX - Heat Exchanger .....	81
IM - Air Intake Manifold .....	82
LF - Lube Oil Filter .....	83
LG - Oil Level Gauge .....	85
LT - Literature .....	88
OB - Oil Level Gauge Location .....	91
OF - Oil Bypass Filter .....	94
OP - Oil Pan .....	97
PS - Scavenge Pump .....	99
RE - Rear Engine Support .....	100
SG - Guard Package .....	101
SP - Fan Spacer .....	102
ST - Starting Motor .....	105
TB - Turbocharger Arrangement .....	108
TC - Torque Converter .....	111
VB - Vibration Isolators .....	112

WF - Corrosion Resistor .....	113
WI - Water Inlet Connection .....	115
WM - Water Manifold .....	117
WO - Water Outlet Connection .....	118
WP - Water Pump .....	120
XS - Exhaust Outlet Connection .....	121

**THIS PAGE INTENTIONALLY LEFT BLANK**

**K19 SERIES GENERATOR DRIVE  
ENGINE  
PRODUCT SUMMARY**

**August 2000**

Model Name	Configuration Number	Application	Max Gross BHP (SAE)	
			1800 rpm	1500 rpm
K19G2	D193056DX02	Standby	448 kW (600 BHP)	369 kW (495 BHP)
		Prime Power	392 kW (525 BHP)	336 kW (450 BHP)
		Continuous	336 kW (450 BHP)	328 (440 BHP)
K19G3	D193088DX02	Standby	511 kW (685 BHP)	448 kW (600 BHP)
		Prime Power	463 kW (620 BHP)	403 kW (540 BHP)
		Continuous	388 kW (520 BHP)	354 kW (475 BHP)
K19G4	D193091DX02	Standby	563 kW (755 BHP)	504 kW (675 BHP)
		Prime Power	507 kW (680 BHP)	448 kW (600 BHP)
		Continuous	429 kW (575 BHP)	355 kW (475 BHP)
* For Explanation of Option by Configuration Section see below				

**\* Note:**

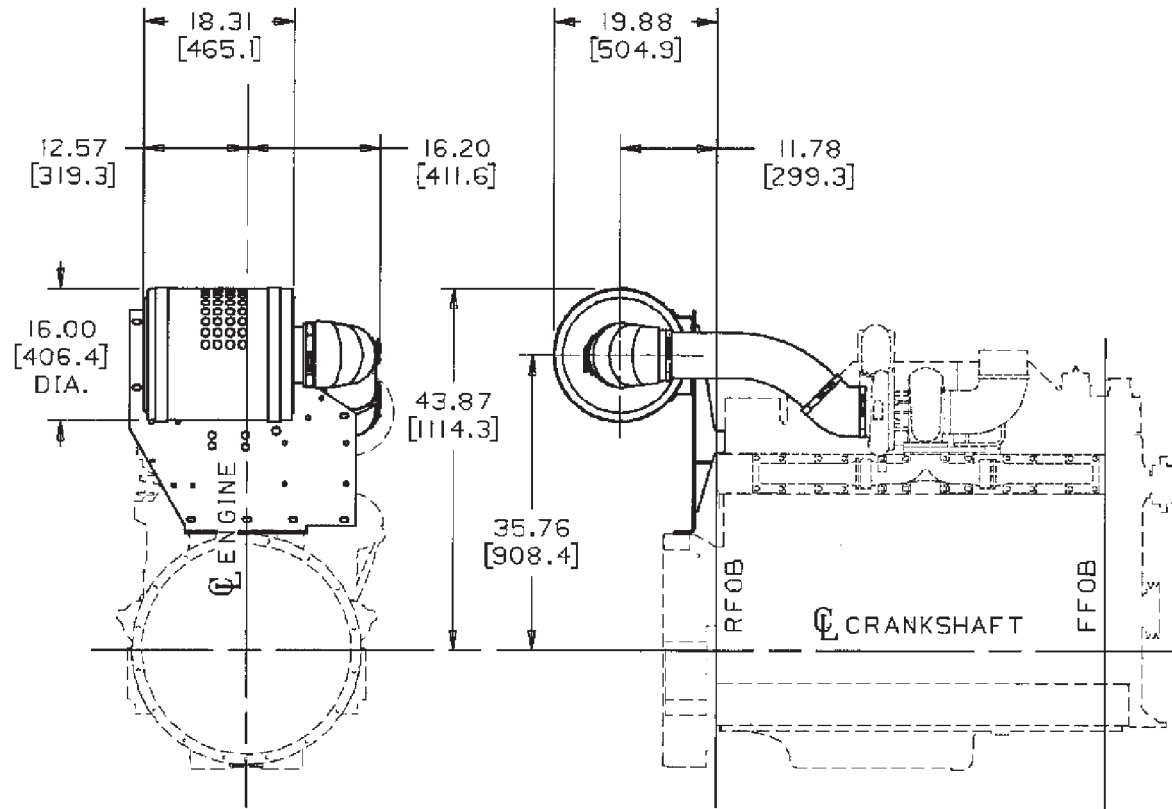
- All components and accessories are mounted and plumbed or wired unless otherwise noted.
- Graphics for standard configuration options may be seen on the installation diagrams.
- N.A. denotes item not available.
- [G] denotes "General Option Category".
- [M] denotes "Mandatory Option Category".

**Caution:**

Proving torsional compatibility of an engine-generator set is the responsibility of the generator-set assembler. Cummins will supply the appropriate engine mass elastic data necessary for the calculations and is prepared to offer assistance with torsional questions concerning the engine.

AC - Air Cleaner

**AC4005**



**AC4005 [G]**

Option #	Model/Size	Duty Rating	Inlet/Outlet Size	Mounted or Kitted
AC 4005	FRAM FA-592CU	Normal Duty	-	Mounted Horizontally

Fram model FA-592CU Normal duty air cleaner with perforated side air inlets.  
 Mounted horizontally at the rear of the engine.  
 For SAE #0 Flywheel Housing.  
 For indoor use only.

AC - Air Cleaner

**AC4039**

ac4039\_mcs

AC4039 [G]

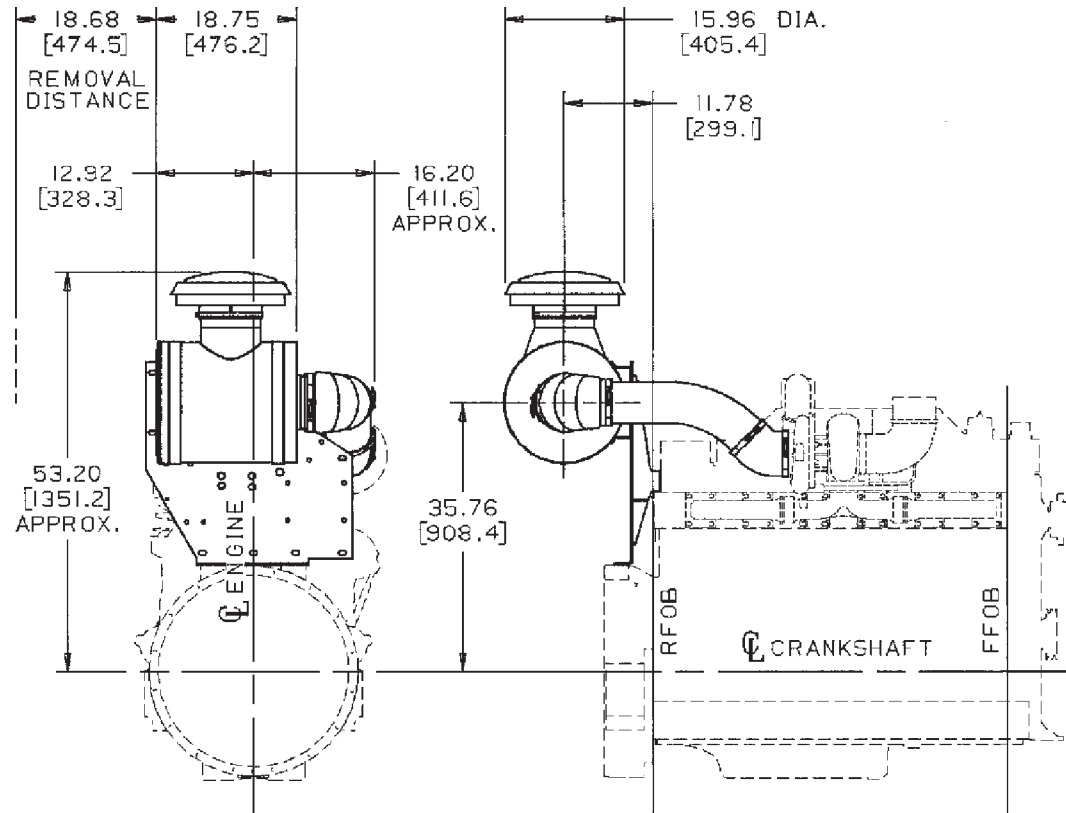
Option #	Model/Size	Duty Rating	Inlet/Outlet Size	Mounted or Kitted
AC 4039	Fleetguard Model AH-1101	Normal Duty Service	-	-

Single stage air cleaner.Fleetguard model AH-1101 (disposable type).Normal Duty Service air cleaner for use in clean environments.

**For 1500 RPM Applications only.**

AC - Air Cleaner

**AC4040**



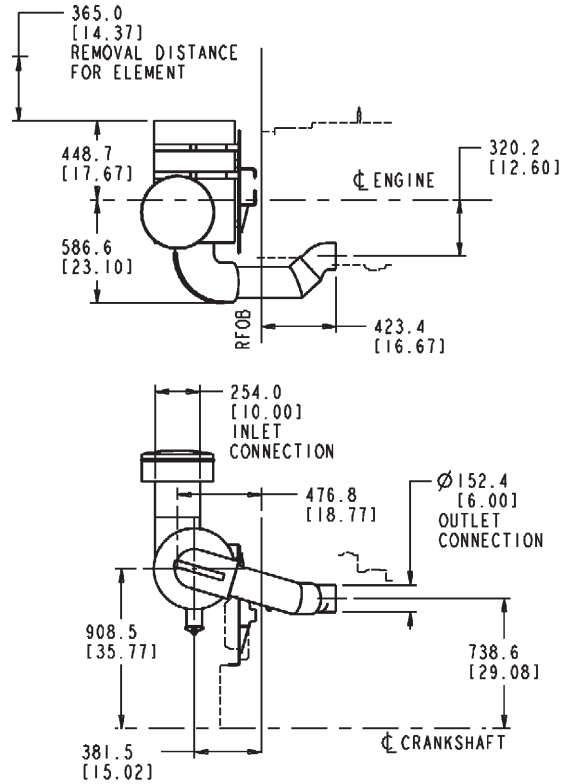
**AC4040 [G]**

Option #	Model/Size	Duty Rating	Inlet/Outlet Size	Mounted or Kitted	Notes	Weight	Value Code
AC 4040	Fleetguard AH 1932700	Normal Duty	203.2 mm [8 in.]/ 177.8 mm [7 in.]	Mounted Horizontally	Includes air cleaner cap	-	-

Fleetguard AH 1932700 normal duty air cleaner  
 Mounted horizontally on SAE #0 flywheel housing  
 Includes air cleaner cap

AC - Air Cleaner

**AC4082**



**AC4082.MCS**

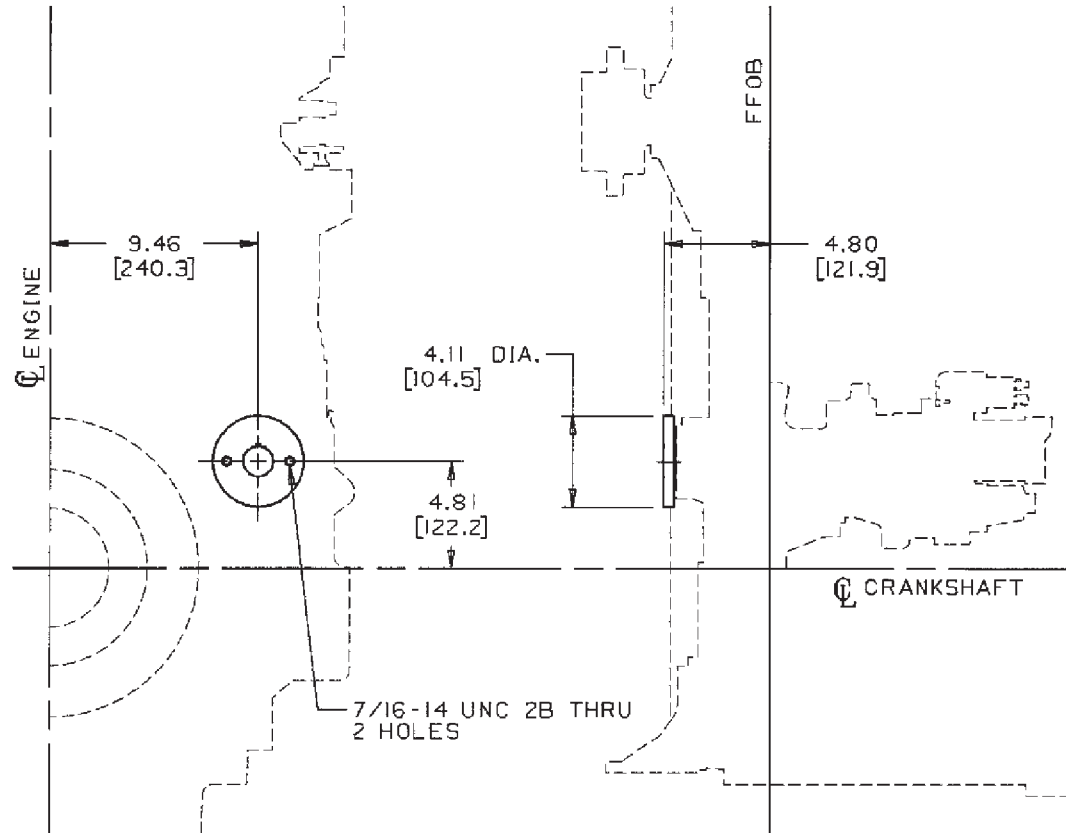
AC4082 [G]

Option #	Model/Size	Duty Rating	Inlet/Outlet Size	Mounted or Kitted
AC 4082	Nelson 71836N	SingleStage / Medium Duty	-	Mounted Horizontally

Single stage, medium duty operation. Nelson model 71836N. Normal Duty Service air cleaner. Mounted horizontally at the rear of the engine.

AD - Accessory Drive

**AD4006**



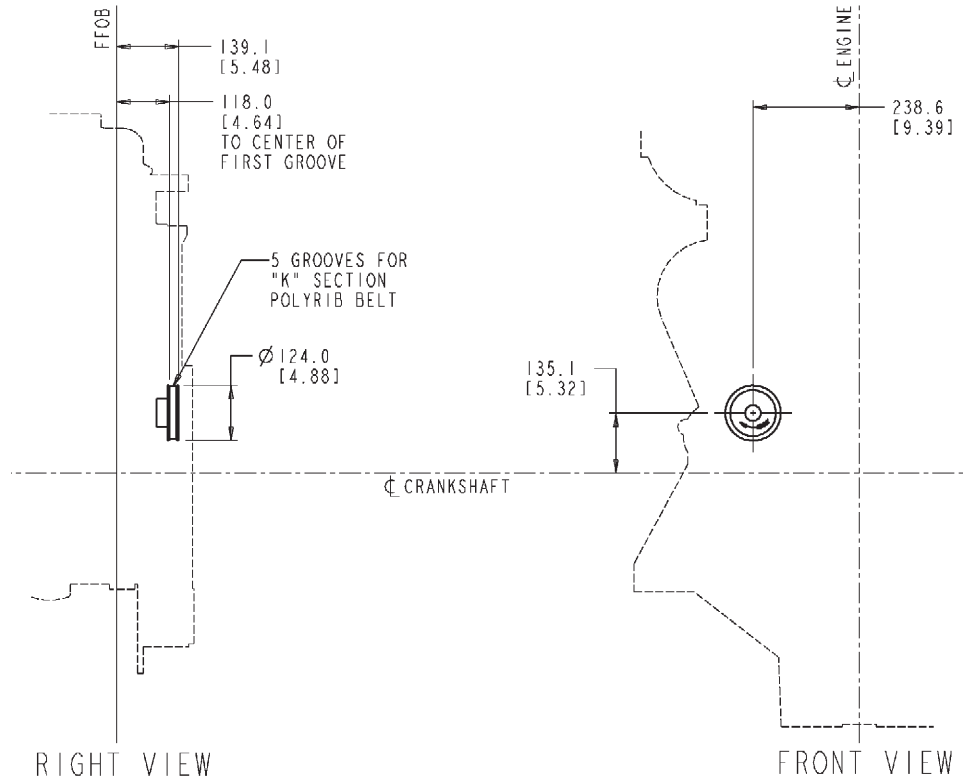
**AD4006 [M]**

Option #	Groove	Bolt Circle	Max. Torque @ Rated rpm	Drive Ratio	Notes	Weight	Value Code
AD 4006	-	-	-	-	Timing Disk Left Side of Engine	-	-

Timing disk. Left (fuel pump) side of engine.

AD - Accessory Drive Pulley

**AD4007**



AD4007\_MCS

AD4007 [M]

Option #	Groove	Bolt Circle	Max. Torque @ Rated rpm	Drive Ratio	Notes	Weight	Value Code
AD 4007	5-rib	139.7 mm [5.5 in.]	N/A	1.68 : 1	-	-	-

Pulley (turns at 1.68 times engine speed) to drive alternator.  
 Right (exhaust) side of engine.

AP - Certification Registries

AP8001

**(No Graphics Required)**

AP8001 [G]

Option #	Agency	Tier Level	Notes	Weight	Value Code
AP 8001	American Bureau of Shipping (ABS)	-	-	n/a	-

**Includes all factory tests required for the engine to be registered for installation in Classed Vessel.  
The final vessel machinery inspection of the cooling, fuel, and lube systems made after the engine is installed, is NOT included.**

American Bureau of Shipping (ABS).

AP - Certification Registries

AP8002

# (No Graphics Required)

AP8002 [G]

Option #	Agency	Tier Level	Notes	Weight	Value Code
AP 8002	Lloyd's Register of Shipping (LR)	-	-	n/a	-

**Includes all factory tests required for the engine to be registered for installation in Classed Vessel.  
The final vessel machinery inspection of the cooling, fuel, and lube systems made after the engine is installed, is NOT included.**

Lloyd's Register of Shipping (LR).

AP - Certification Registries

AP8007

**(No Graphics Required)**

AP8007 [G]

Option #	Agency	Tier Level	Notes	Weight	Value Code
AP 8007	Bureau Veritas (BV)	-	-	n/a	-

**Includes all factory tests required for the engine to be registered for installation in Classed Vessel.  
The final vessel machinery inspection of the cooling, fuel, and lube systems made after the engine is installed, is NOT included.**

Bureau Veritas (BV).

## AP - Certification Registries

AP8008
--------

# (No Graphics Required)

AP8008 [G]

Option #	Agency	Tier Level	Notes	Weight	Value Code
AP 8008	Det Norske Veritas (DNV)	-	-	n/a	-

Includes all factory tests required for the engine to be registered for installation in Classed Vessel.  
 The final vessel machinery inspection of the cooling, fuel, and lube systems made after the engine is installed, is NOT included.

Det Norske Veritas (DNV).

AP - Certification Registries

AP8009

**(No Graphics Required)**

AP8009 [G]

Option #	Agency	Tier Level	Notes	Weight	Value Code
AP 8009	Canadian Coast Guard Ship Safety Bureau (CCG)	-	-	n/a	-

**Includes all factory tests required for the engine to be registered for installation in a Classed Vessel.  
The final vessel machinery inspection of the cooling, fuel, and lube systems made after the engine is installed, is NOT included.**

Canadian Coast Guard Ship Safety Bureau (CCG).

## AP - Certification Registries

AP8035
--------

# (No Graphics Required)

AP8035 [G]

Option #	Agency	Tier Level	Notes	Weight	Value Code
AP 8035	Germanischer Lloyd (GL)	-	-	n/a	-

Includes all factory tests required for the engine to be registered for installation in Classed Vessel.  
 The final vessel machinery inspection of the cooling, fuel, and lube systems made after the engine is installed, is NOT included.

Germanischer Lloyd (GL).

AP - Certification Registries

AP8087

**(No Graphics Required)**

AP8087 [G]

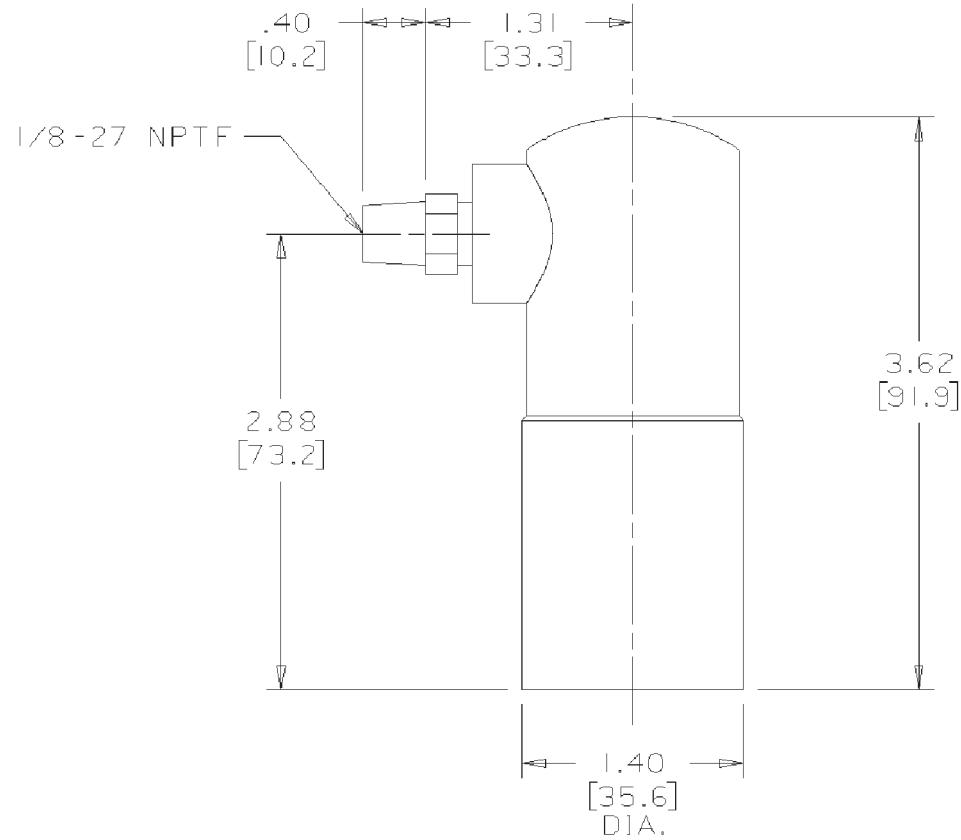
Option #	Agency	Tier Level	Notes	Weight	Value Code
AP 8087	Korean Registry of Shipping (KR)	-	-	n/a	-

**Includes all factory tests required for the engine to be registered for installation in a Classed Vessel.  
The final vessel machinery inspection of the cooling, fuel, and lube systems made after the engine is installed, is NOT included.**

Korean Registry of Shipping (KR).

CA - Air Cleaner Plumbing

**CA8007**



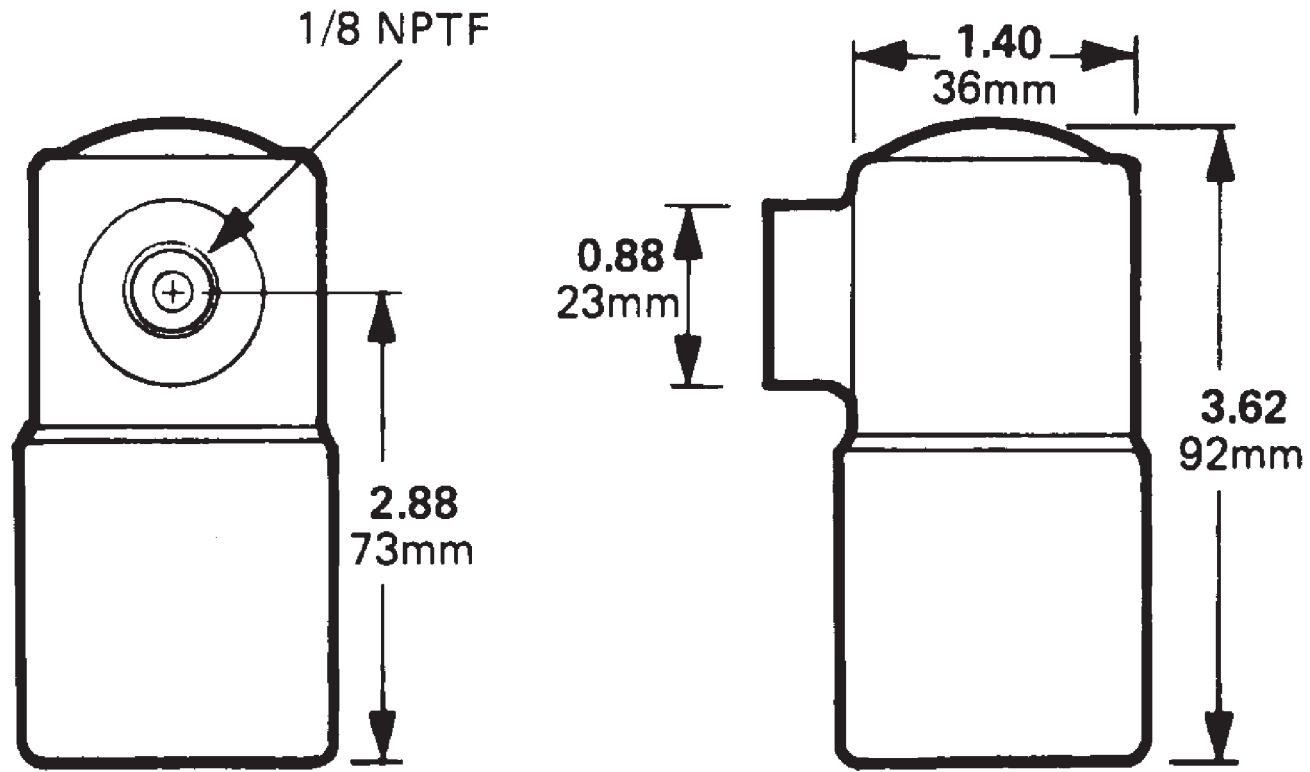
CA8007 [G]

Option #	Type Plumbing	Material	Includes	Inside Diameter	Notes	Weight	Value Code
CA 8007	Single air cleaner restriction service indicator set at 635.0 mm [25 in.] of water	-	1/8 - 27 NPTF Nipple	-	-	n/a	-

Single Air cleaner restriction service indicator set at 635.0 mm [25 in.] of water.  
**Supplied in the kit for use with customer furnished air intake systems.**

CA - Air Cleaner Plumbing

CA8048



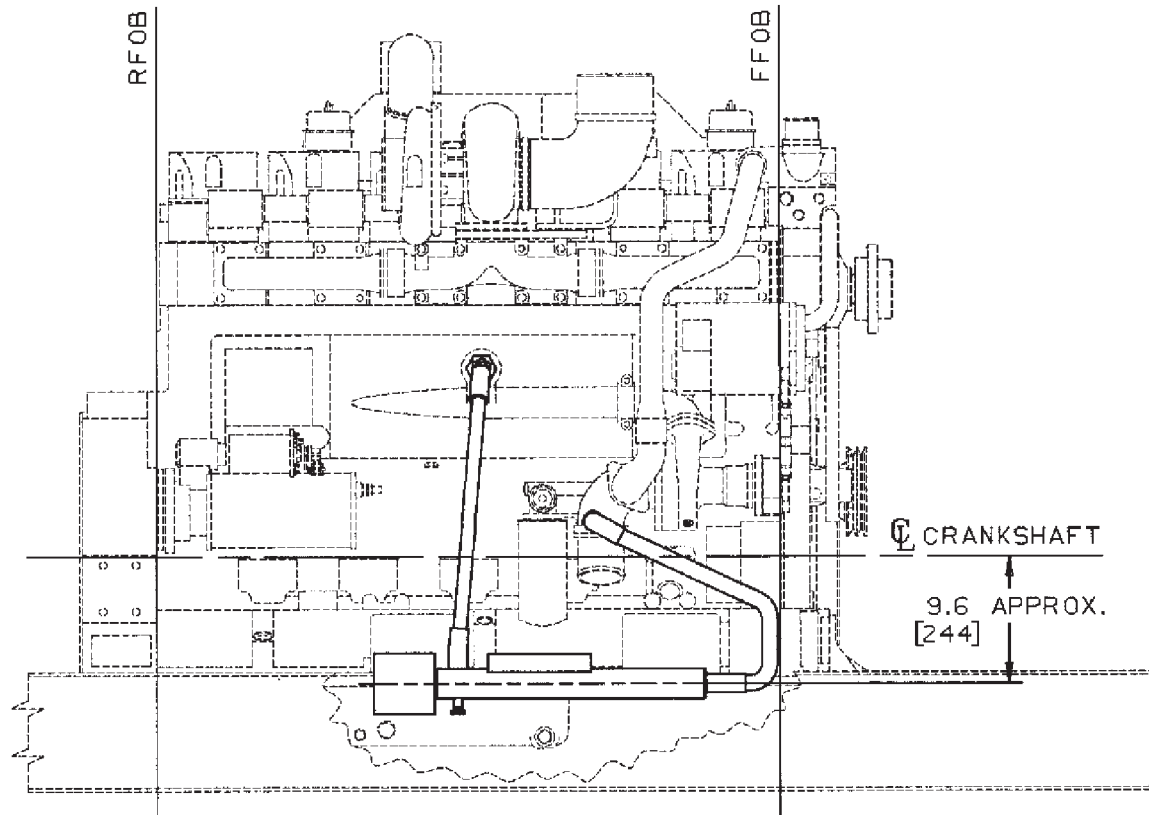
CA8048 [G]

Option #	Type Plumbing	Material	Includes	Inside Diameter	Notes	Weight	Value Code
CA 8048	Single air cleaner restriction service indicator	-	1/8-27 NPTF Nipple	-	-	n/a	-

Single Air cleaner restriction service indicator set at 635.0 mm [25 in.] of water. **Supplied mounted.**

CS - Starting Aids

**CS4013**



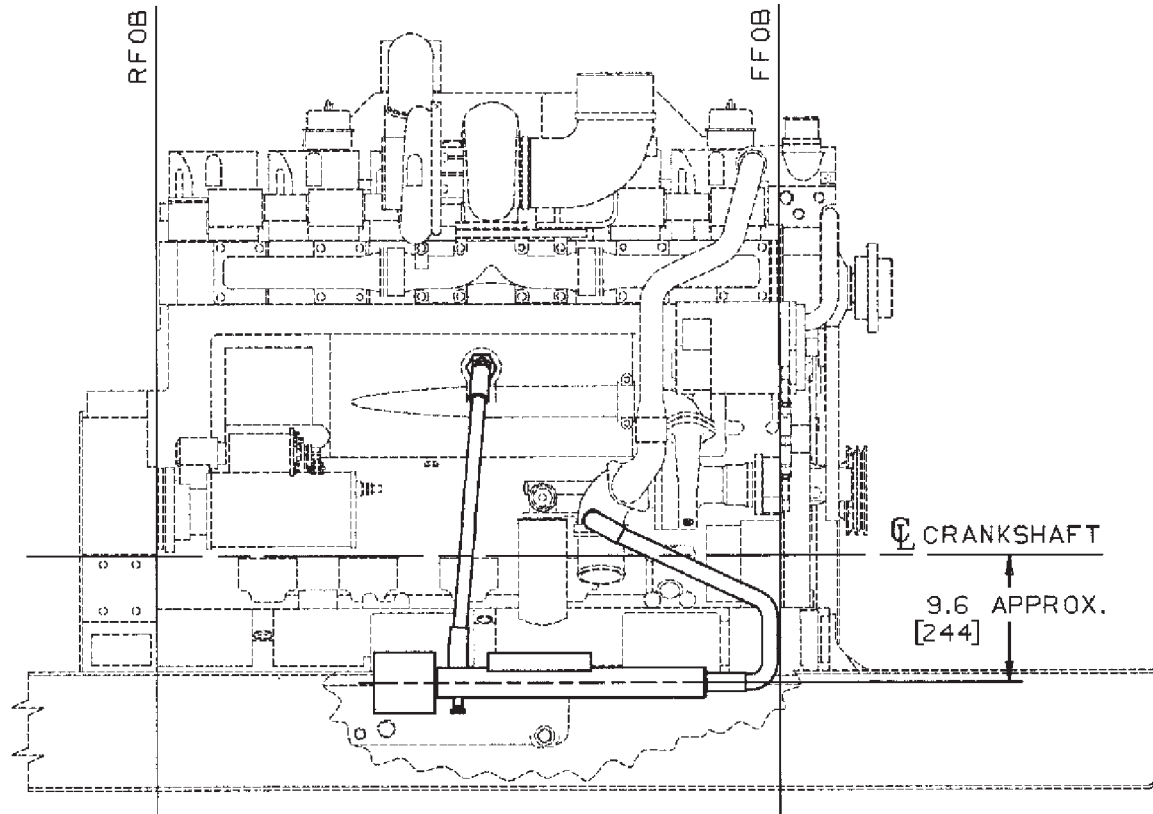
**CS4013 [G]**

Option #	Type	Kit includes	Notes	Weight	Value Code
CS 4013	Coolant heater	Heater, bracket, mounting and plumbing.	Supplied in kit for mounting to customer supplied subbase.	-	-

Coolant heater 240V, 4000 watt single phase.  
 Supplied in kit for mounting to customer supplied subbase.

CS - Starting Aids

**CS4014**



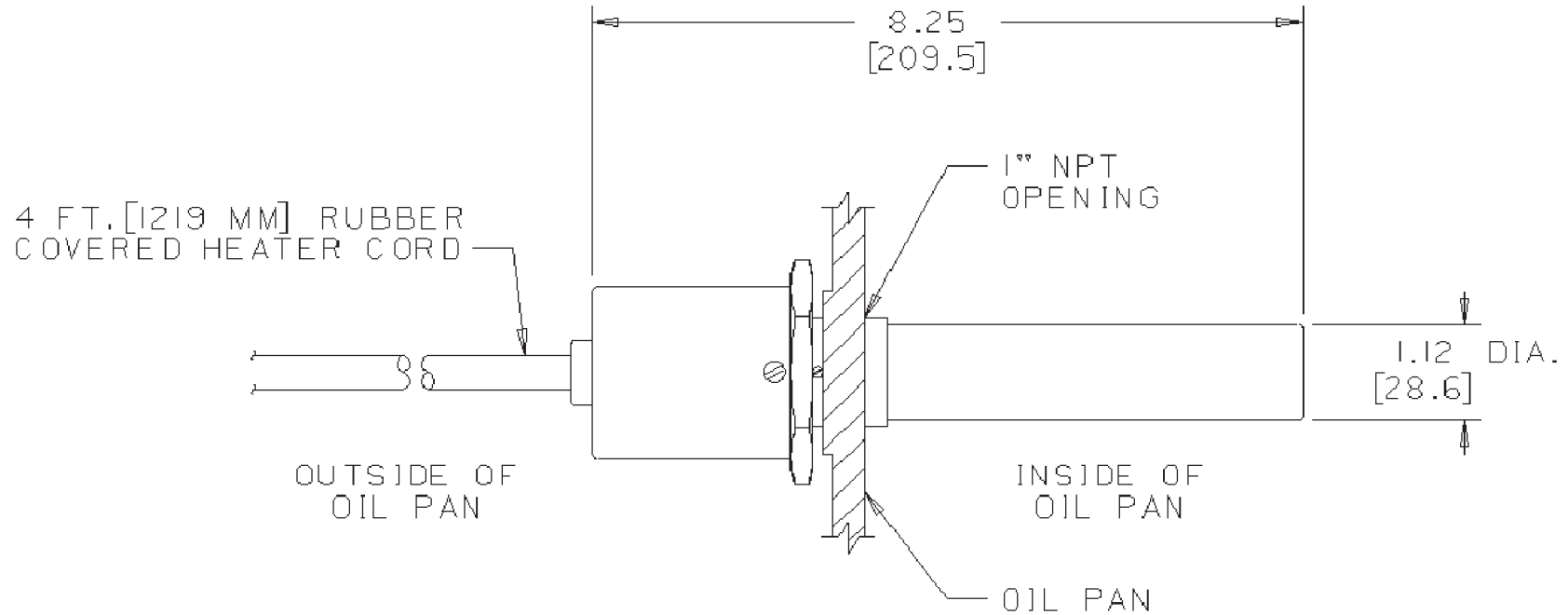
**CS4014 [G]**

Option #	Type	Kit includes	Notes	Weight	Value Code
CS 4014	Coolant heater	Heater, bracket, mounting and plumbing.	Supplied in kit for mounting to customer supplied subbase.	-	-

Coolant heater 120V, 4000 watt single phase.  
 Supplied in kit for mounting to customer supplied subbase.

CS - Starting Aids

**CS8039**



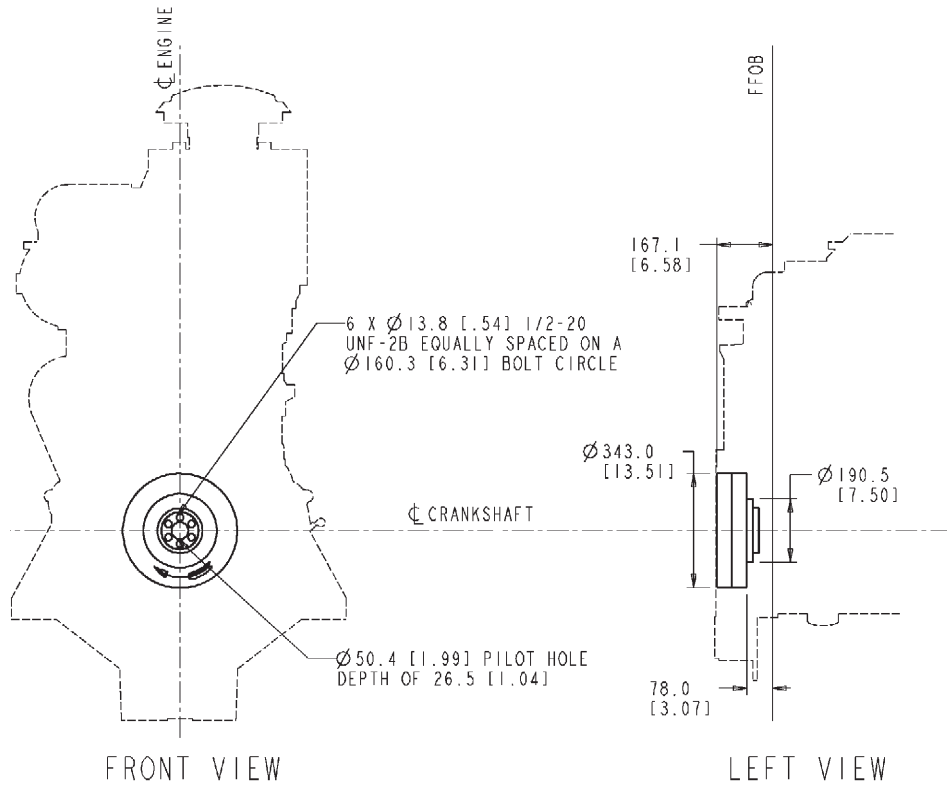
**CS8039 [G]**

Option #	Type	Kit includes	Notes	Weight	Value Code
CS 8039	Oil Pan immersion heater	-	Supplied in kit.	-	-

300 watt/240V oil pan immersion heater, supplied in kit.  
Customer to mount in oil pan.

DA - Vibration Damper

**DA4014**



**DA4014\_MCS**

**DA4014 [G]**

Option #	Fan Drive Crank Pulley Dia.	Addt'l Drive Pulleys	PTO Provision	Max.Engine Rated Speed	Notes	Weight	Value Code
DA 4014	-	No drive pulleys	-	-	-	-	-

Dual Viscous vibration dampers without drive pulleys.

**For use with Remote or Heat Exchanger Cooling.**

## DA - Vibration Damper

DA4018
--------

## (No Graphics Required)

DA4018 [G]

Option #	Fan Drive Crank Pulley Dia.	Addt'l Drive Pulleys	PTO Provision	Max. Engine Rated Speed	Notes	Weight	Value Code
DA 4018	-	-	Adaptor incorporated into crank pulley.	-	-	-	-

Dual Viscous vibration damper and crank pulley for driving fan with Poly-V belt. PTO adapter incorporated into crank pulley.

DC - Duty Cycle

DC8001

**(No Graphics Required)**

DC8001 [G]

Option #	Description	Notes
DC 8001	Normal duty cycle	Uses standard performance parts.

Normal duty cycle for use in standby Generator set.  
Uses standard performance parts.

## DC - Duty Cycle

**DC8003****(No Graphics Required)**

## DC8003 [G]

Option #	Description	Notes	Weight	Value Code
DC 8003	Heavy duty cycle	For high output/heavy duty application	n/a	-

For high output/heavy duty application such prime power gen drive, hydraulic excavator, etc.  
Uses prime performance parts.

EC - Engine Controls

EC4041

**(No Graphics Required)**

EC4041 [G]

Option #	Description	Opening Temp.	Notes	Weight	Value Code
EC 4041	Engine Wiring	-	-	n/a	-

Used to wire all safety switches and transducers on the K19 engine. When electric starter is specified with engine wiring, a magnetic switch must be selected.

**Must use with engine instrument panel**

## EC - Engine Controls

EC8226
--------

## (No Graphics Required)

## EC8226 [G]

Option #	Description	Opening Temp.	Notes	Weight	Value Code
EC 8226	Speed Switch	-	Mounts by plugging into circuit board contained in engine instrument panel.	n/a	-

24V electronic adjustable speed switch for overspeed shut-down. Switch operates at 350 rpm crank termination and 1450 rpm paralleling. Overspeed operating range adjustments available are: 1725 to 2415 rpm with SAE #00 and #0 flywheel and 1725-2760 rpm with SAE #1 and #2 flywheel. Requires magnetic pickup. Mounts by plugging into circuit board contained in engine instrument panel enclosure options.

## EC - Engine Controls

EC8273
--------

## (No Graphics Required)

## EC8273 [G]

Option #	Description	Opening Temp.	Notes	Weight	Value Code
EC 8273	Low lube oil pressure switch	-	Shuts engine down on decreasing pressure at $82.7 \pm 13.8$ kPa [ $12 \pm 2$ psi].	n/a	-

Low lube oil pressure switch.

Shuts engine down on decreasing pressure at  $82.7 \pm 13.8$  kPa [ $12 \pm 2$  psi].

Fungus and corrosion resistant.

For use only with Cummins supplied engine wiring harness.

Replaces EC 8220.

When used with Cummins instrument panels these switches shut the engine down and provide a signal to indicate that a shut-down took place.

## EC - Engine Controls

EC8275
--------

## (No Graphics Required)

## EC8275 [G]

Option #	Description	Opening Temp.	Notes	Weight	Value Code
EC 8275	High coolant temperature switch	-	Shuts engine down on increasing temperature at $106 \pm 2^{\circ} \text{C}$ [ $223 \pm 3^{\circ} \text{F}$ ].	n/a	-

Switch shuts engine down on increasing temperature at  $106 \pm 2^{\circ} \text{C}$  [ $223 \pm 3^{\circ} \text{F}$ ]. Fungus and corrosion resistant.

## EC - Engine Controls

EC8277
--------

## (No Graphics Required)

## EC8277 [G]

Option #	Description	Opening Temp.	Notes	Weight	Value Code
EC 8277	NFPA switches	-	5 switches	n/a	-

Five switches functioning as follows:

Two low lube oil pressure switches: one which provides an alarm on decreasing pressure at  $124.1 \pm 13.8$  kPa [ $18 \pm 2$  psi] and a second which shuts the engine down on decreasing pressure at  $82.7 \pm 13.8$  kPa [ $12 \pm 2$  psi]. Two high coolant temperature switches: one which provides an alarm on increasing temperature at  $102 \pm 2^\circ$  C [ $215 \pm 3^\circ$  F] and a second which shuts the engine down on increasing temperature at  $106 \pm 2^\circ$  C [ $223 \pm 3^\circ$  F].

A separate low coolant temperature switch which provides an alarm on decreasing temperature at  $32 \pm 1^\circ$  C [ $90 \pm 2^\circ$  F].

## EC - Engine Controls

EC8316
--------

# (No Graphics Required)

EC8316 [G]

Option #	Description	Opening Temp	Notes
EC 8316	High Coolant Temperature Switch	-	Shuts engine down on increasing temperature at $106 \pm 1.7$ °C [ $223 \pm 3$ °F].

Switch shuts engine down on increasing temperature at  $106 \pm 1.7$  °C [ $223 \pm 3$  °F]. Fungus and corrosion resistant.

**Cannot be used with Cummins supplied harness.**

**64 VDC nominal system**

## EC - Engine Controls

EC8317

# (No Graphics Required)

EC8317 [G]

Option #	Description	Opening Temp	Notes
EC 8317	Low lube oil pressure switch	-	Shuts engine down on decreasing temperature at 12 ± 2 PSI. [83 ± 14 kpa].

Shuts engine down on decreasing temperature at 12 ± 2 PSI. [83 ± 14 kpa]. Fungus and corrosion resistant.

**Cannot be used with Cummins supplied harness.**

**64 VDC nominal system**

## EC - Engine Controls

EC8318
--------

# (No Graphics Required)

EC8318 [G]

Option #	Description	Opening Temp	Notes
EC 8318	Low lube oil pressure switch	-	Shuts engine down on decreasing temperature at 30 ± 3 PSI. [207 ± 21 kpa].

Shuts engine down on decreasing temperature at 30 ± 3 PSI  
207 ± 21 kpa].

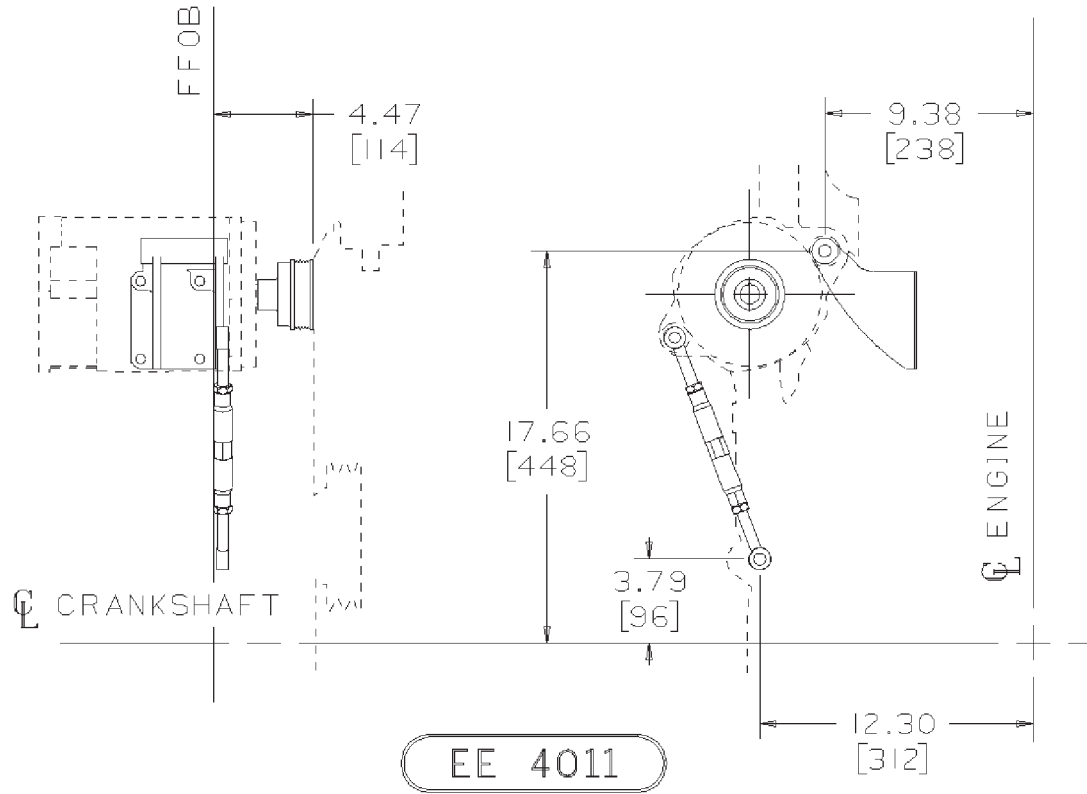
Fungus and corrosion resistant.

**Cannot be used with Cummins supplied harness.**

**64 VDC nominal system**

EE - Alternator

EE4011



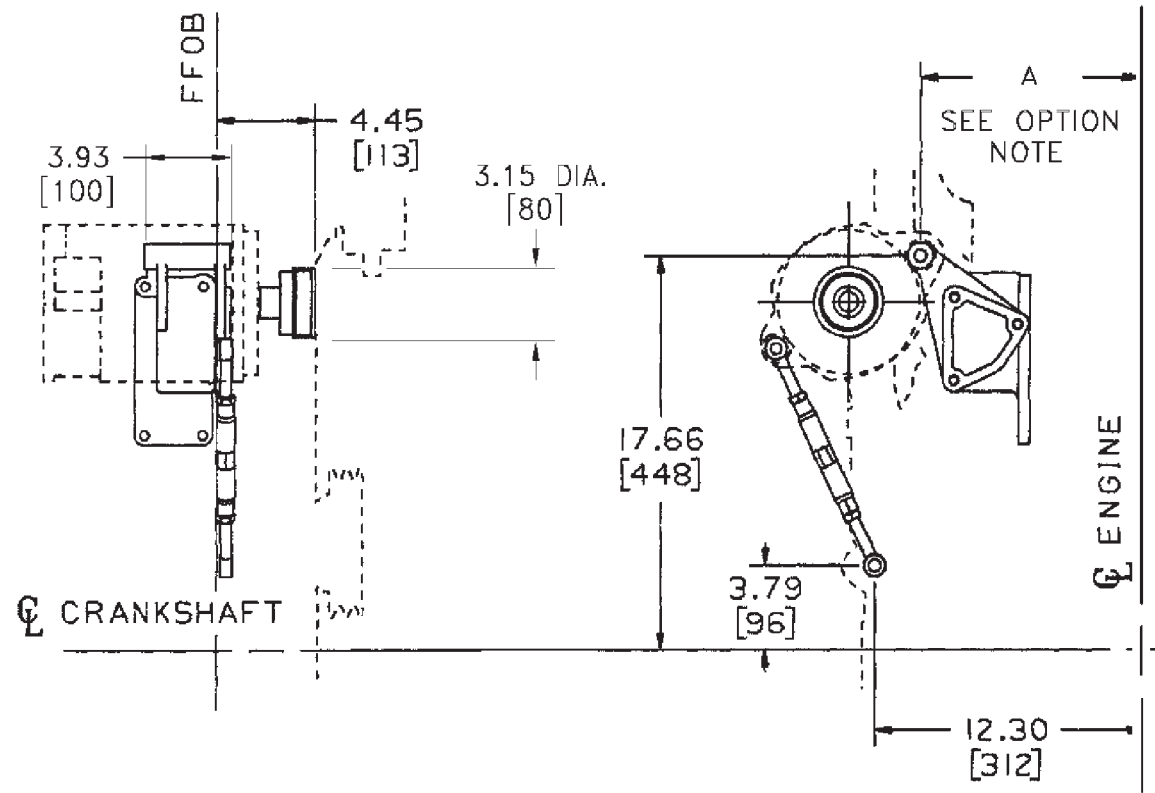
EE4011 [G]

Option #	Mfg./Model	Voltage/Amps	Notes	Weight	Value Code
EE 4011	Delco Remy and Leace-Neville	N/A	Alternator drive ratio 2.92 x engine speed	-	-

Alternator mounting parts for Delco Remy and Leece-Neville model alternators mounted in standard location. Alternator drive ratio is 2.92 x engine speed. Includes bracket, link, belt and 5-groove alternator pulley.

EE - Alternator

EE4020



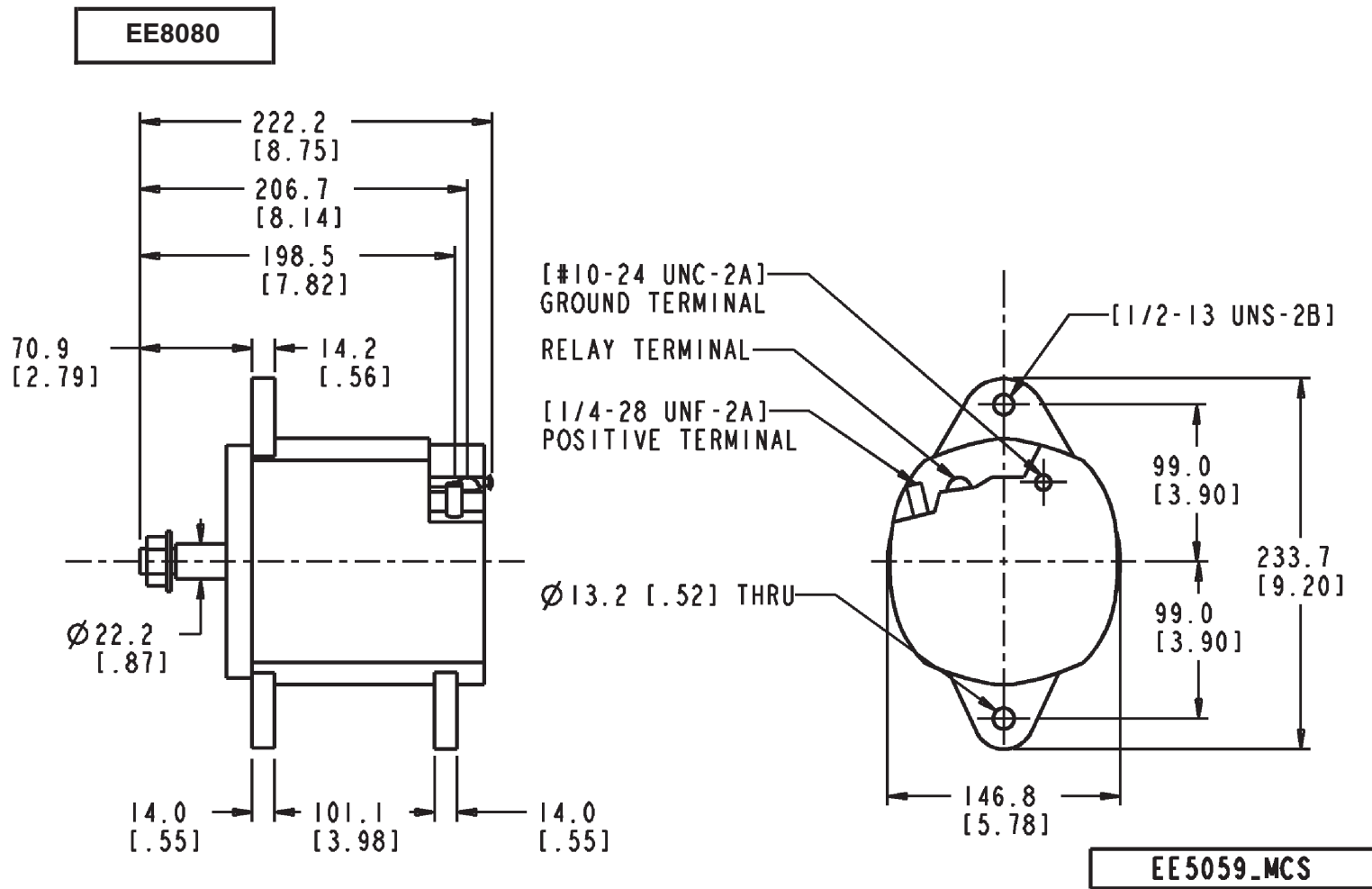
EE4020 [G]

Option #	Manufacturer/Model	Voltage/Amps	Notes	Weight	Value Code
EE 4020	Delco Remy and Leace-Neville	-	Alternator drive ratio 2.92 x engine speed	-	-

Alternator mounting parts for Delco Remy and Leece-Neville model alternators mounted in standard location.  
 Alternator drive ratio is 2.92 x engine speed.  
 Includes bracket, link, belt and 5-groove alternator pulley.  
 Alternator mounting bracket is part of fan options.



EE - Alternator



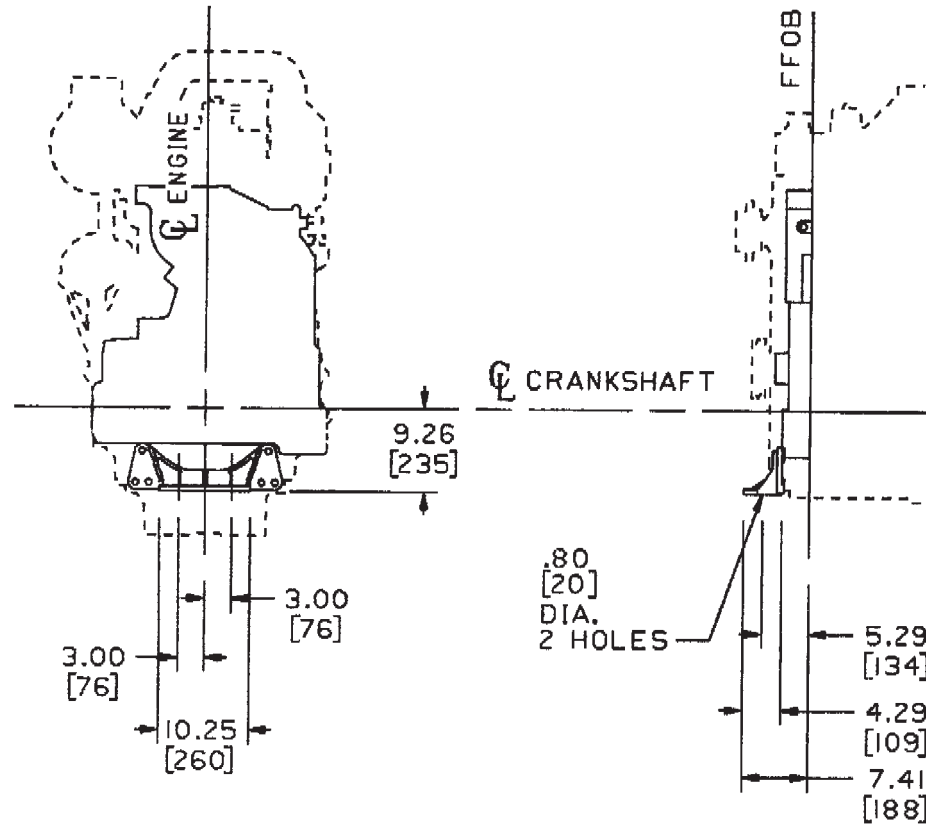
EE8080 [G]

Option #	Manufacturer/Model	Voltage/Amps	Notes
EE 8080	Delco Remy model 20 SI 300	24V/35A	Built-in voltage regulator

24V/35A negative ground model 20 SI 300 Delco Remy alternator with built-in voltage regulator. Includes ground strap.

EM - Front Engine Support

**EM4058**



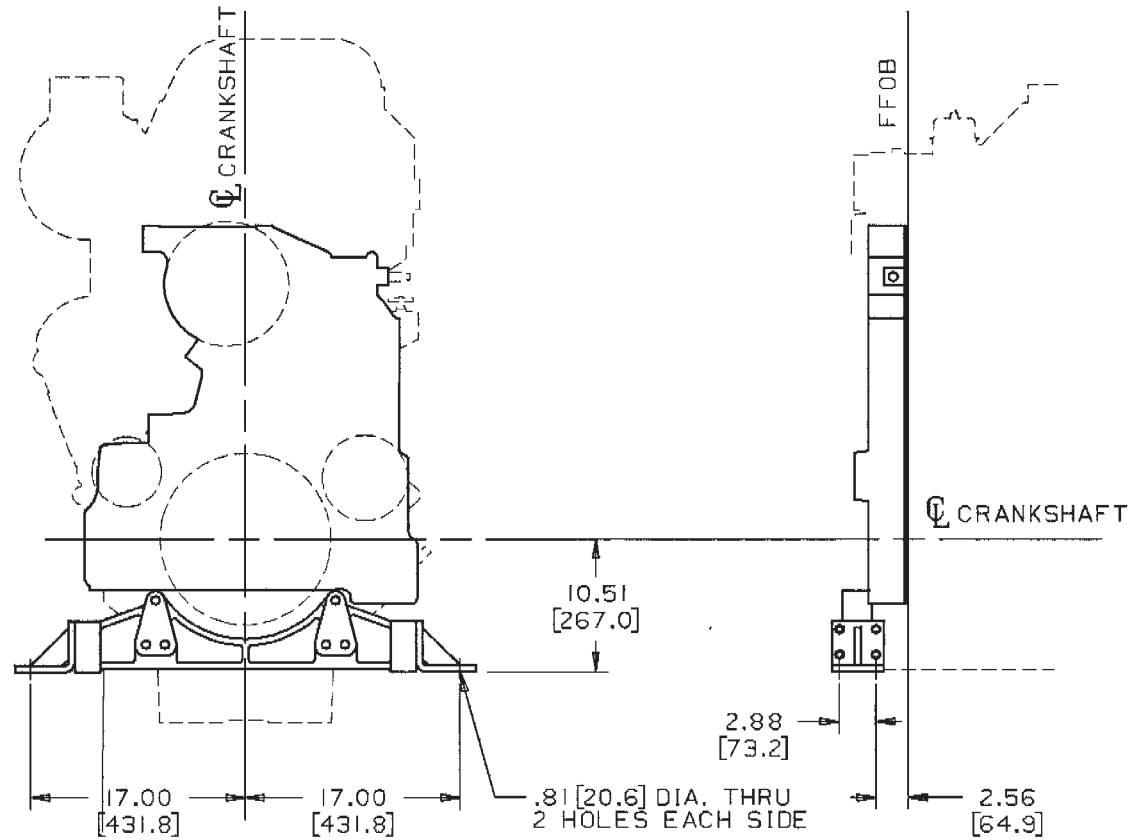
**EM4058 [G]**

Option #	Type	Attachment Hole	Damper	Notes	Weight	Value Code
EM 4058	2 Bolt Pad	20.2 mm dia. [51/64 in.] dia.	-	-	-	-

2 bolt pad type front engine support with 20.2 mm [51/64 in.] dia. holes to accept the commonly used 19.1 mm [3/4 in.] dia. load mounts. Includes aluminum gear cover without front out auxillary pump provisions.

EM - Front Engine Support

**EM4100**



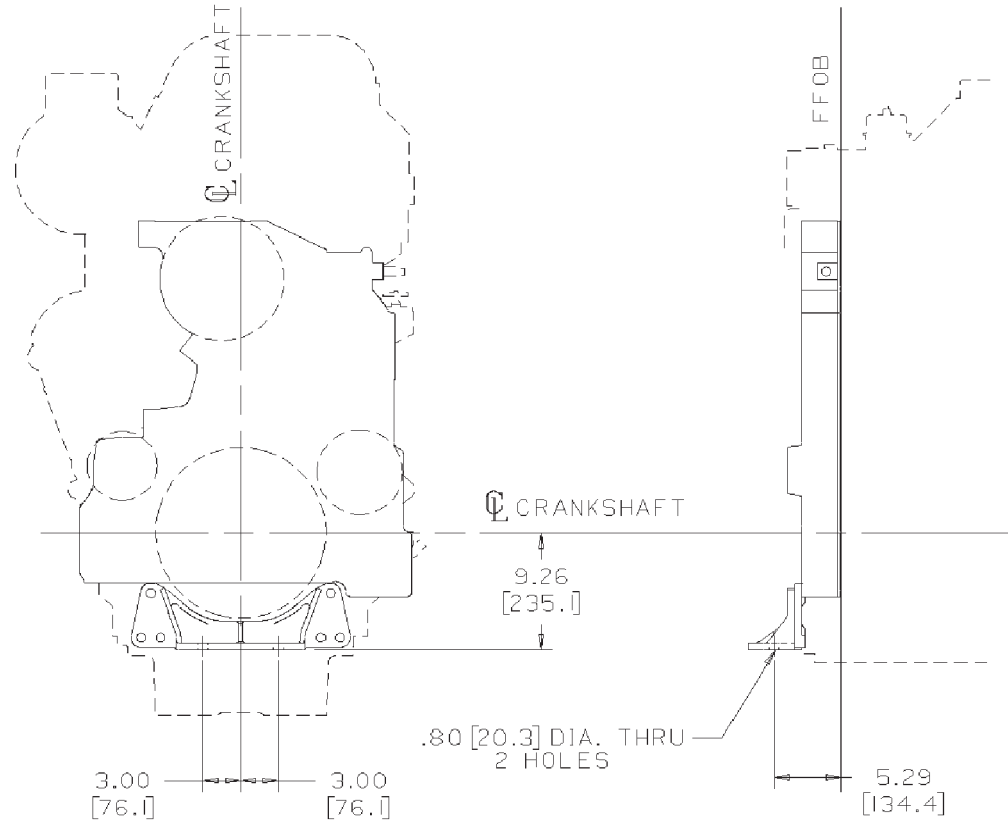
**EM4100 [G]**

Option #	Type	Attachment Hole	Damper	Notes	Weight	Value Code
EM 4100	Pad type	863.6 mm [34 in.] mounting centers	-	-	-	-

Front engine support with 863.6 mm [34 in.] mounting centers.  
 For use with applications that require a cast iron gear cover without front out auxiliary pump drive provisions.  
 Includes cast iron gear cover.

EM - Front Engine Support

**EM4106**



**EM4106 [G]**

Option #	Type	Attachment Hole	Damper	Notes	Weight	Value Code
EM 4106	2 Bolt Pad type	20.24 mm [0.797 in.] dia.	-	-	-	-

2 bolt pad type front engine support with 20.24 mm [0.797 in.] dia. holes to accept the commonly used 19.1 mm [0.75 in.] dia. Lord mounts. Includes cast iron gear cover without front out auxiliary pump provisions.

EP - Engine Instrument Panel

**EP4005**

ep4005\_mcs

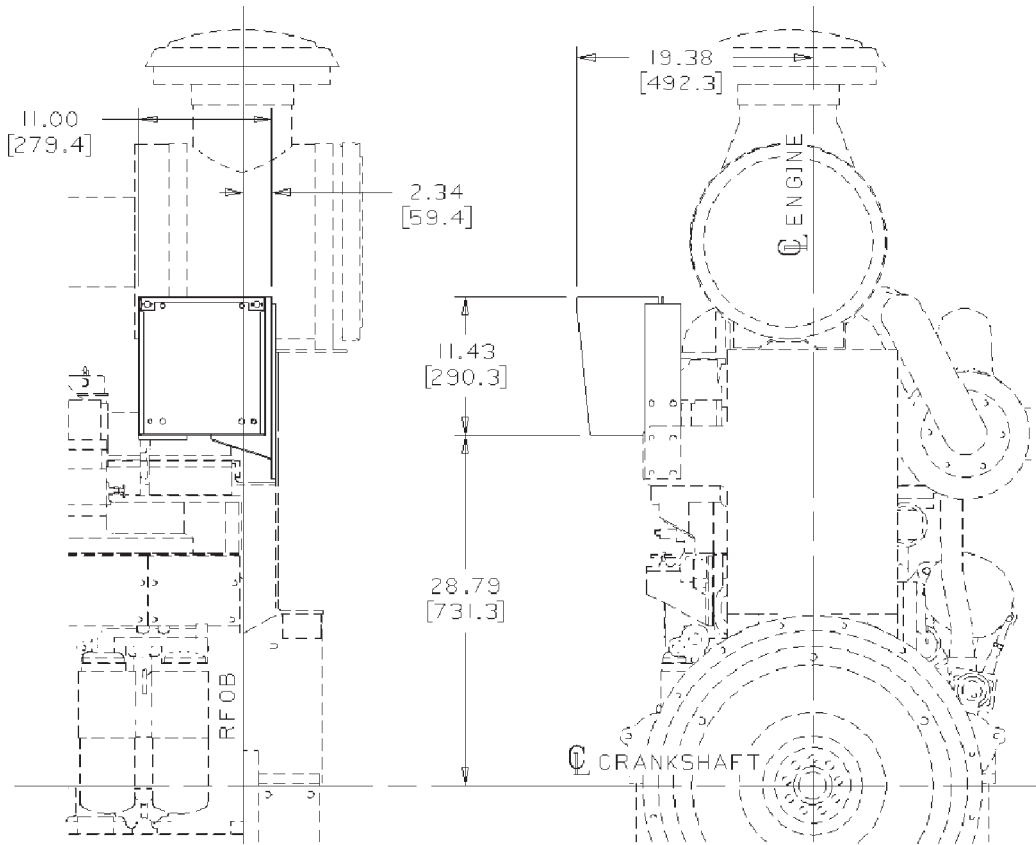
EP4005 [G]

Option #	Mounting Location	Notes
EP 4005	On left rear side of engine	Must use with engine instrument panel

Engine instrument panel enclosure for mounting engine instrument panel on the left rear side of engine.

EP - Engine Instrument Panel

**EP4008**



**EP4008 [G]**

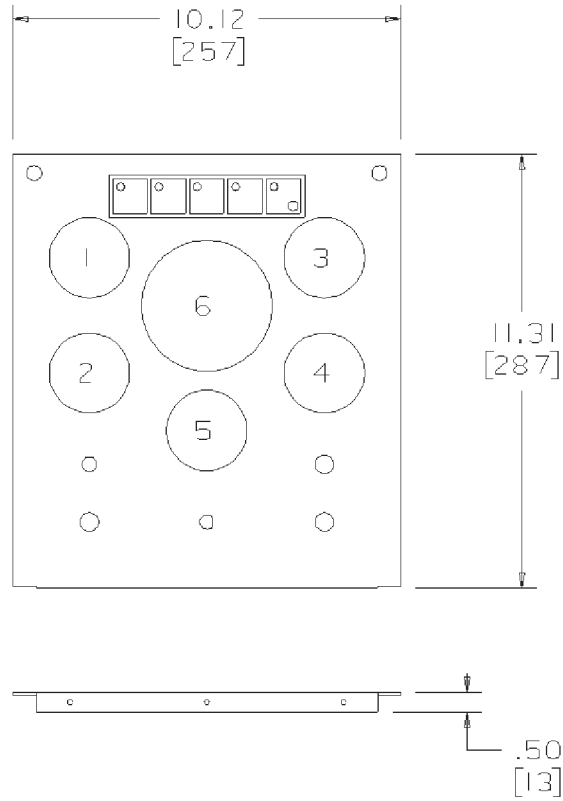
Option #	Mounting Location	Notes	Weight	Value Code
EP 4008	On air cleaner bracket left rear of engine	Must use with engine instrument panel	n/a	-

Engine instrument panel enclosure for mounting engine instrument panel on the air cleaner bracket left rear side of engine. Consists of NEMA 1 enclosure with printed circuit board and terminal blocks. Must use with engine instrument panel. May use with LF 4021.

May be mounted to engines using bracket in Cummins supplied air cleaner options and AC 4018 accessory mounting bracket.  
For use with or without HVT.

EP - Engine Instrument Panel

**EP8030**



- 1. OIL PRESSURE GAUGE
- 2. VOLTMETER
- 3. OIL TEMPERATURE GAUGE
- 4. WATER TEMPERATURE GAUGE
- 5. HOURMETER
- 6. TACHOMETER

**EP 8030**

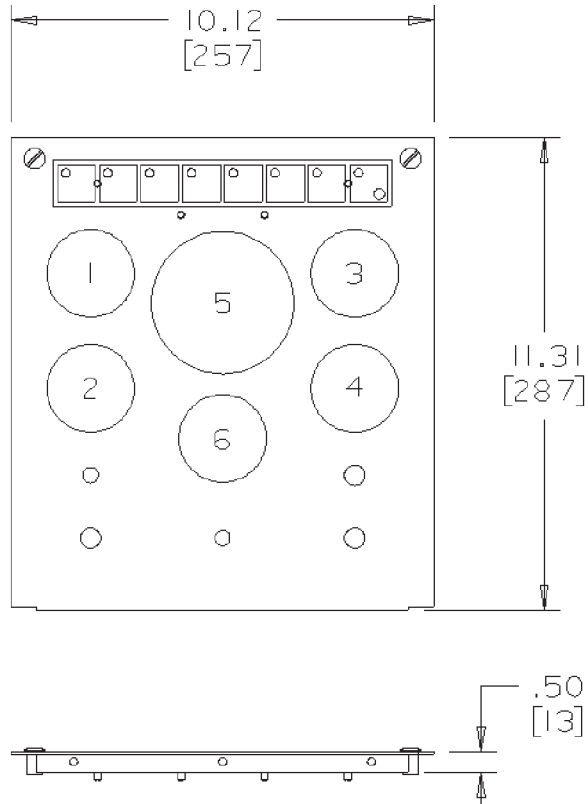
**EP8030 [G]**

Option #	Mounting Location	Notes	Weight	Value Code
EP 8030	Left rear of engine in EP	Non-NFPA	n/a	-

Non-NFPA standard engine instrument panel with tachometer.  
 For use with electronic governor. Includes pressure and temperature switches.

EP - Engine Instrument Panel

**EP8031**



- 1. OIL PRESSURE GAUGE
- 2. VOLTMETER
- 3. OIL TEMPERATURE GAUGE
- 4. COOLANT TEMPERATURE GAUGE
- 5. TACHOMETER
- 6. HOURMETER

**EP 8031**

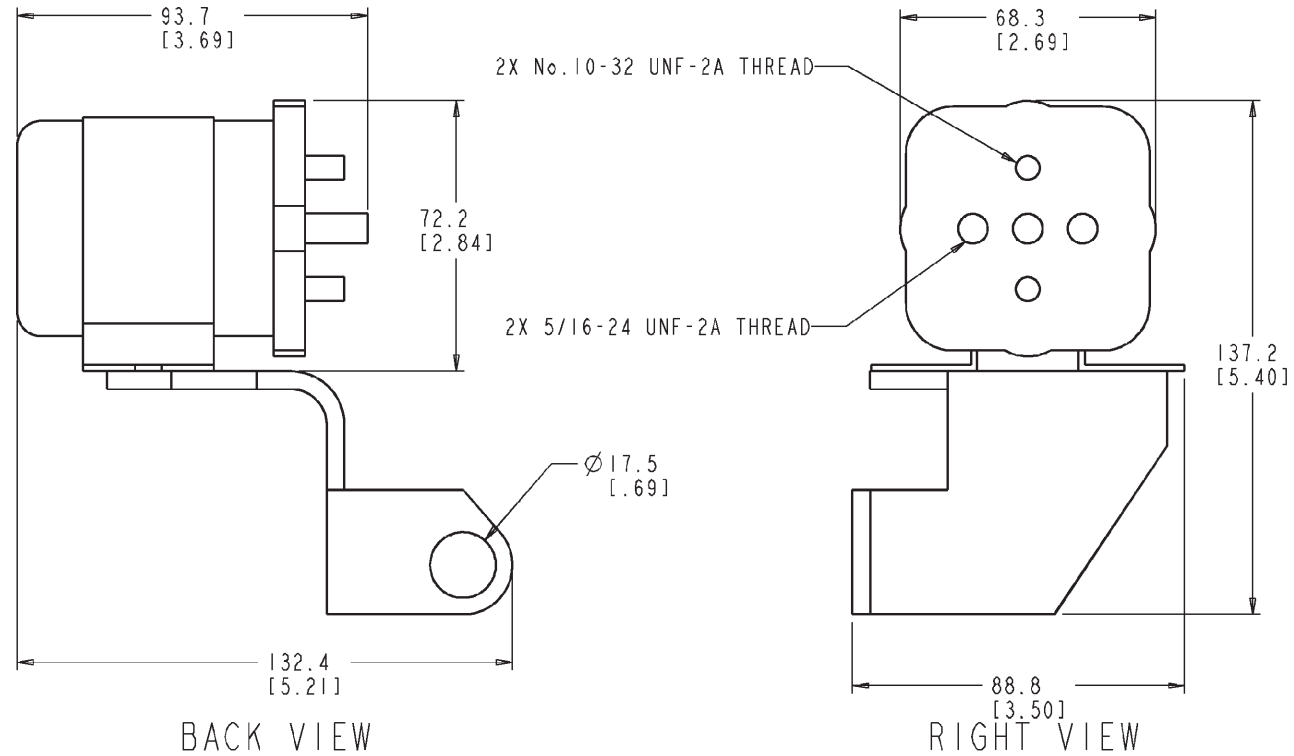
EP8031 [G]

Option #	Mounting Location	Notes	Weight	Value Code
EP 8031	Left rear of engine in EP	NFPA	n/a	-

NFPA standard (NFPA-99 and NFPA-110) engine instrument panel with pre-alarm shutdown lamps and tachometer.  
For use with electronic governor.

ES - Magnetic Switch

**ES8029**



**ES8029\_MCS**

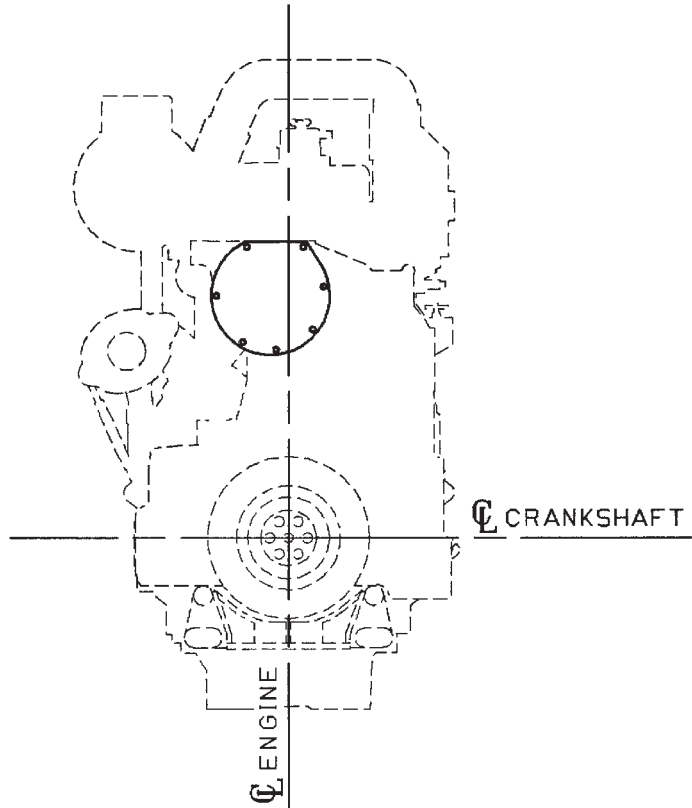
ES8029 [G]

Option #	Mounting location	Notes	Weight	Value Code
ES 8029	Secured to starter mounting flange	24V	n/a	-

24V insulated magnetic switch for use with single or dual positive engagement electric starter/starters.  
 Secured to the starter mounting flange.  
 When engine wiring and electric starters are specified, this option must be selected.

FA - Fan

**FA4048**



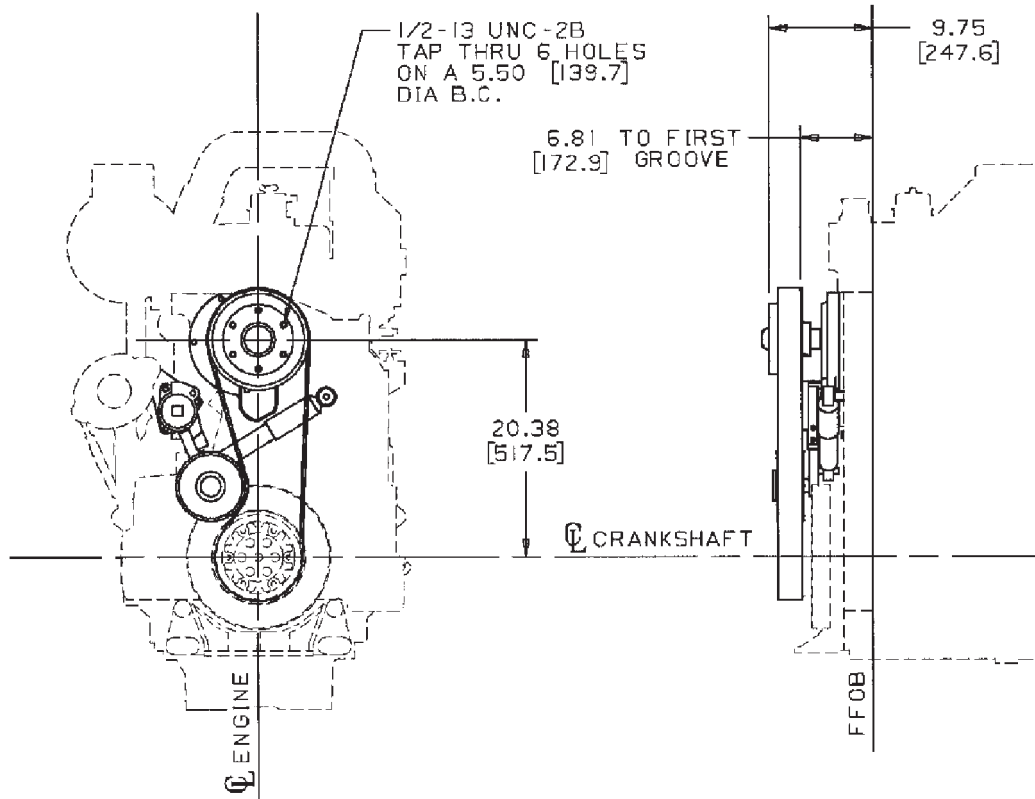
**FA4048 [G]**

Option #	Bolt Circle mm	Drive Ratio	Fan Center mm	Tensioner Type
FA 4048	-	-	-	-

Cover plate for remote cooling system. Required when fan drive arrangement is not specified.

FA - Fan Drive Arrangement

**FA4053**



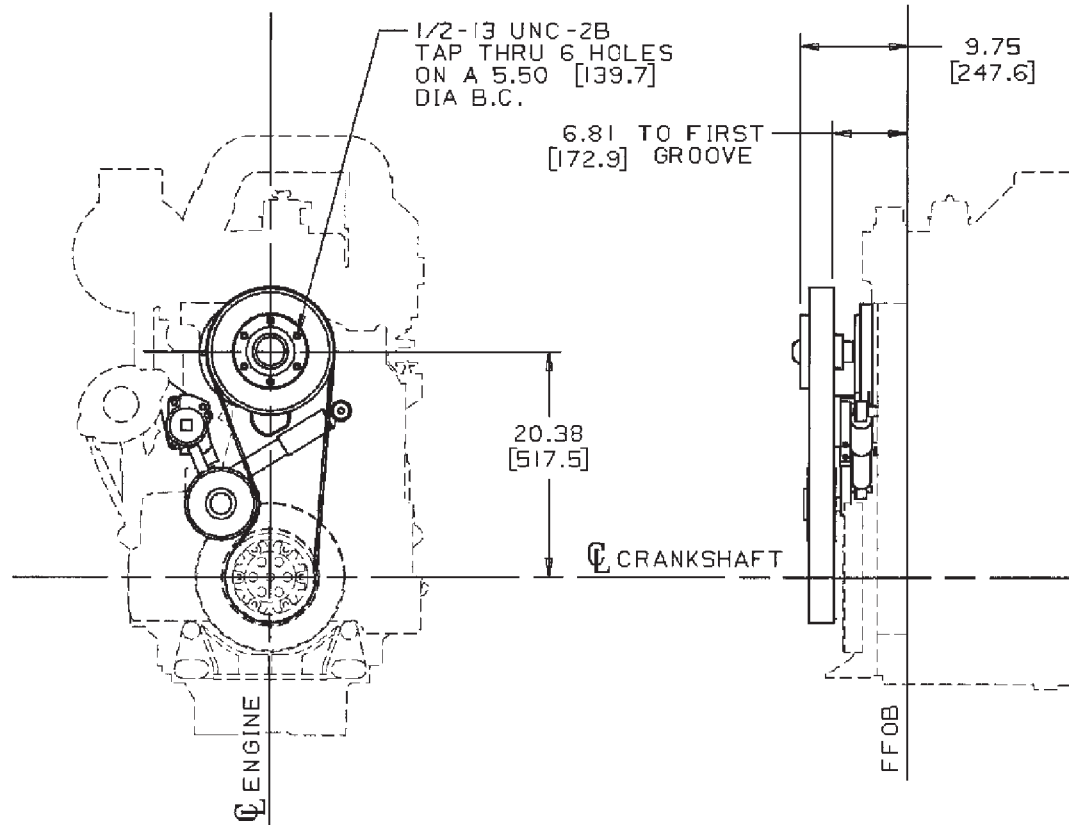
**FA4053 [G]**

Option #	Bolt Circle	Drive Ratio	Fan Center	Tensioner Type	Notes	Weight	Value Code
FA 4053	139.7 mm [5.5 in.]	0.85:1	518.2 mm [20.4 in.]	-	-	-	-

Fan drive and front end arrangement for customer supplied radiator cooling.  
Includes alternator support. 0.85:1 drive ratio.  
518.2 mm [20.4 in.] fan center.

FA - Fan Drive Arrangement

**FA4054**



**FA4054 [G]**

Option #	Bolt Circle	Drive Ratio	Fan Center	Tensioner Type	Notes	Weight	Value Code
FA 4054	139.7 mm [5.5 in.]	0.70:1	518.2 mm [20.4 in.]	-	-	-	-

Fan drive and front end arrangement for Cummins supplied or customer supplied radiator cooling. Includes alternator support. 0.70:1 drive ratio. 518.2 mm [20.4 in.] fan center.

FA - Fan Drive Arrangement

FA4091

**(No Graphics Required)**

FA4091 [G]

Option #	Bolt Circle	Drive Ratio	Fan Center	Tensioner Type	Notes	Weight	Value Code
FA 4091	-	-	-	-	-	-	-

No fan drive. This is a no content option required for selection of proper gear cover.

FF - Fuel Filter

**FF4013**

ff4013\_mcs

FF4013 [G]

Option #	Element	Filtration	Water Separator/WIF Sensor	Location/Notes
FF 4013	Dual	N/A	N/A	Mounted on fuel pump side of engine

Dual spin-on fuel filters without check valve. Mounted on hand hole cover fuel pump side.

FF - Fuel Filter

**FF4035**

ff4035\_mcs

**FF4035 [G]**

Option #	Element	Filtration	Water Separator/WIF Sensor	Location/Notes
FF 4035	Dual	N/A	N/A	Mounted on fuel pump side of engine

Dual spin-on fuel filters without check valve. Mounted on hand hole cover fuel pump side.

FH - Flywheel Housing

**FH4018**

fh4018\_mcs

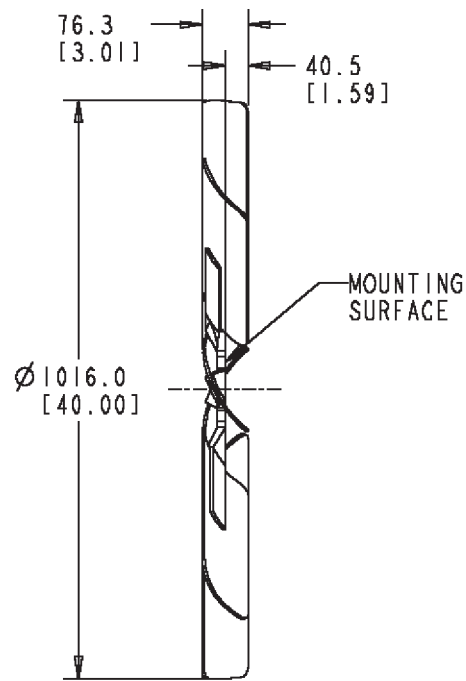
**FH4018 [G]**

Option #	SAE/Wet or Dry	Application	Housing Material	Starter Quadrant
FH 4018	SAE #0 Dry	Dry	Cast Iron	-

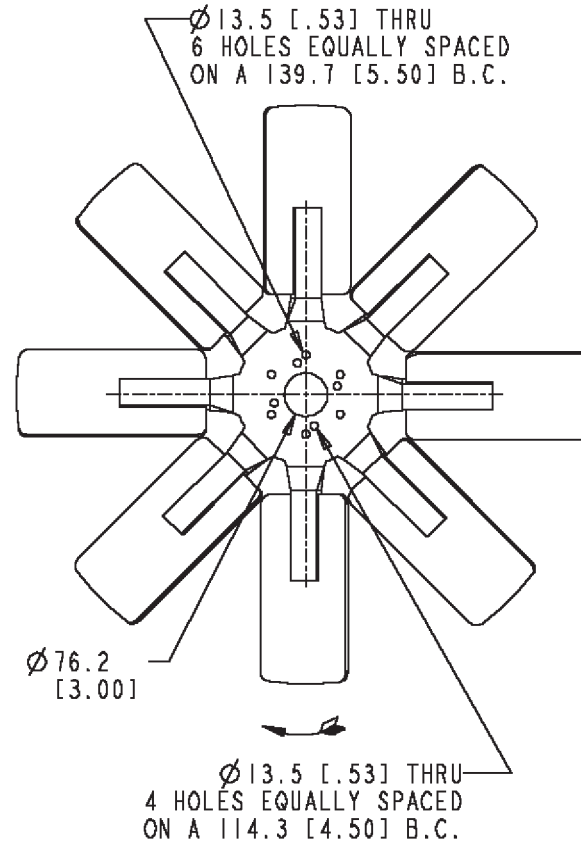
SAE #0 cast iron flywheel housing for dry application. Complies with SAE J617. Has provisions for mounting a 5/8-18 UNF-2A or 3/4-16 UNF threaded magnetic pick up and both sides are machined for starter mounting.

FN - Engine Fan

**FN4005**



FOR FAN PERF. CURVE DATA SEE  
APPL. ENGR. BULLETIN OR ADVISOR  
OR CONSULT FAN SUPPLIER



**FN4005 [G]**

Option #	Type	Diameter	Max Speed	Material
FN 4005	Blower	40.0 in.	1700 RPM	Aluminum

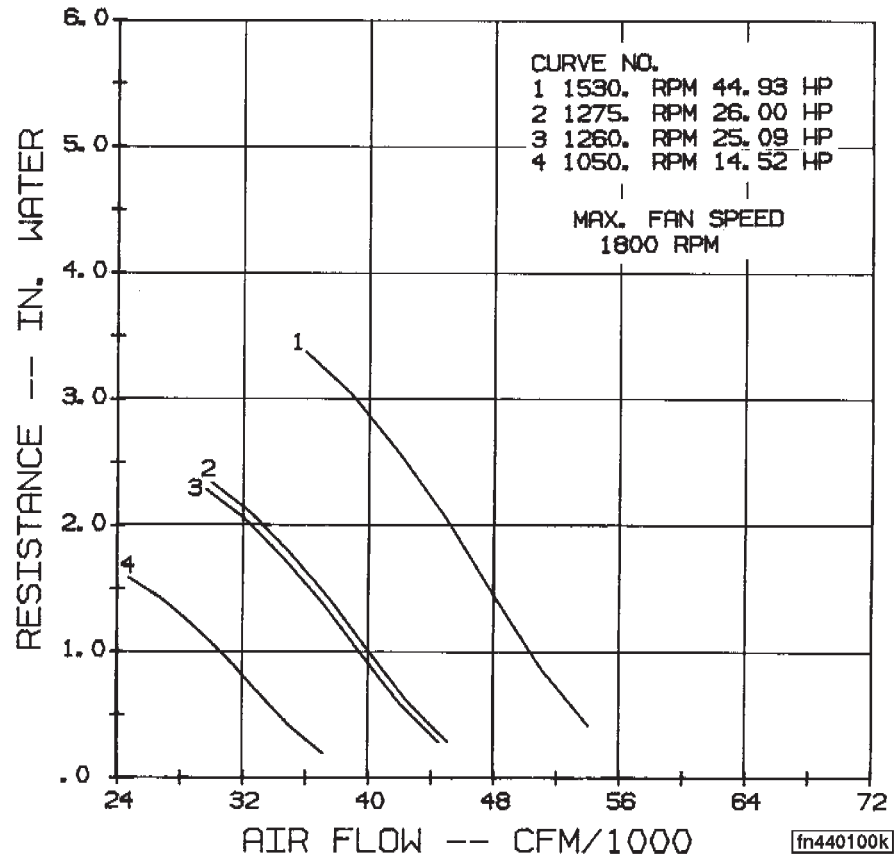
Type B 8 blade aluminum with 76.2 mm [3 in.] pilot dia. 4 mounting holes on 114.3 mm[4.5 in.] bolt circle dia. and 6 mounting holes on 139.7 mm [5.5 in.] bolt circle dia.

Note: Requires .538 in. mounting thickness. 1700 max. rpm.

For fan performance data consult your Application Engineer.

FN - Engine Fan

**FN4401**



FN4401 [G]

Option #	Type	Diameter	Max. Speed	Material	Notes	Weight	Value Code
FN 4401	Blower	1117.6 mm [44 in.]	1800 rpm	-	-	-	-

1117.6 mm [44 in.] 8 blade blower fan with 76.2 mm [3 in.] pilot dia. and [6] holes on 139.7 mm [5.5 in.] B.C. diameter and with [4] holes on 114.3 mm [4.5 in.] B.C. Maximum allowable fan speed is 1800 rpm.

Supplied in kit.

FO- Oil Fill

**FO4025**

fo4025\_mcs

FO4025 [G]

Option #	Description	Notes
FO 4025	Oil Fill	-

Oil fill located on No. 4 Cam Follower Cover

FP - Fuel Pump And Governor

FP4075

**(No Graphics Required)**

FP4075 [G]

Option #	Description	Notes	Weight	Value Code
FP 4075	Woodward PSG Governor	-	-	-

Woodward PSG hydraulic governor with external droop adjustment and PTG / Non AFC auto fuel pump with limiting speed governor.

Includes Vernier throttle control.

Woodward PSG hydraulic governor with:

- Solid ball head
- 3 slot pilot valve bushing
- External droop adjustment

Includes:

- AFC style PTG/Auto fuel pump
- Vernier throttle control
- 2:1 drive ratio for 1800/1500 rpm operation

## FP - Fuel Pump and Governor

FP4105
--------

## (No Graphics Required)

FP4105 [G]

Option #	Description	Notes	Weight	Value Code
FP 4105	Cummins EFC Governing System	-	-	-

Cummins Electronic Fuel Control Governor (24V DC normally closed) system. Fuel pump with limiting speed governor. Actuator installed in fuel pump AFC cavity. Requires an engine mounted magnetic pick-up. Includes a plug-in type control module installed in the engine instrument panel or generator control panel. Control module requires a 24 volt negative ground power supply. Without load sensing module.

The governor actuator moves to the fully closed position with electrical failure or shutdown.

**Note: The governor actuator moves to the fully closed position with electrical failure, or shutdown.**

FP - Fuel Pump

FP4106

## (No Graphics Required)

FP4106 [G]

Option #	Description
FP 4106	Cummins EFC Governing System

Each governing system consists of: Limiting speed type engine fuel pump with carbon graphite bushing equipped gear pump. Normally closed actuator with fuel metering valve mounted in-fuel pump. Magnetic pick-up. Governor control module. Provisions for wiring of remote "Idle-run" (governed speed) toggle switch and governed speed adjusting potentiometer.

Operational requirements: Must have 24V DC power supply; insulated or negative ground. Governing control system must be wired per 3032429 wiring diagram.

Governing system for: Single generator set, isochronous or droop operation. Paralleled generator sets, droop operation only.

Governor control module supplied in kit. Has integral adjustments for governed speed and speed droop.

## FP - Fuel Pump

FP4110
--------

## (No Graphics Required)

## FP4110 [G]

Option #	Description	Notes	Weight	Value Code
FP 4110	Woodward 2301A governor with EG-1PC actuator	Non-AFC fuel pump	-	-

Woodward 2301A series electronic governor with EG-1PC actuator and non-AFC fuel pump with limiting speed governor. Includes control unit with load sensing in kit.

FR - Power Rating

**FR4125**

**(No Graphics Required)**

FR4125 [G]

Option #	Rated Horsepower	Peak Torque	CPL	Certified
FR 4125	600 BHP @ 1800 RPM	-	-	-

600 BHP at 1800 RPM.  
495 BHP at 1500 RPM.  
For Stand-By duty applicaton.

FR - Power Rating

**FR4126**

**(No Graphics Required)**

FR4126 [G]

Option #	Rated Horsepower	Peak Torque	CPL	Certified
FR 4126	525 BHP @ 1800 RPM	-	-	-

535 BHP Prime Power with 600 BHP overload capability at 1800 rpm.  
 450 BHP Prime Power with 495 BHP overload capability at 1500 rpm.  
 For Prime Power application.  
 For use with premium engine performance components.

FR - Power Rating

**FR4128**

**(No Graphics Required)**

FR4128 [G]

Option #	Rated Horsepower	Peak Torque	CPL	Certified
FR 4128	685 BHP @ 1800 RPM	-	-	-

685 BHP at 1800 RPM.  
600 BHP at 1500 RPM.  
For Stand-By duty application.

FR - Power Rating

**FR4129**

**(No Graphics Required)**

FR4129 [G]

Option #	Rated Horsepower	Peak Torque	CPL	Certified
FR 4129	620 BHP @ 1800 RPM	-	-	-

620 BHP Prime Power with 685 BHP overload capability at 1800 rpm.  
 540 BHP Prime Power with 600 BHP overload capability at 1500 rpm.  
 For Prime Power application.  
 For use with Premium Engine Performance Components.

FR - Power Rating

FR4212

**(No Graphics Required)**

FR4212 [G]

Option #	Rated Horsepower	Peak Torque	CPL	Certified
FR 4212	755 BHP @ 1800 RPM	-	4153	-

755 BHP @ 1800 RPM.  
675 BHP @ 1500 RPM.  
For Stand-By duty applicaton.  
CPL: 4153  
KTA19-G4

FR - Power Rating

**FR4213**

**(No Graphics Required)**

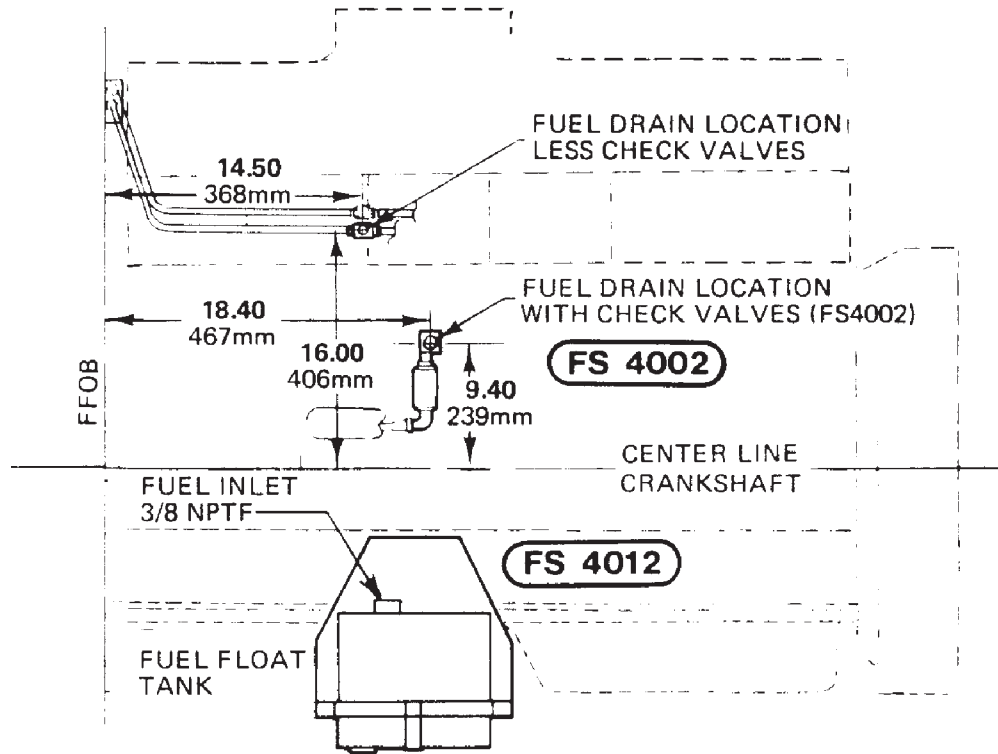
FR4213 [G]

Option #	Rated Horsepower	Peak Torque	CPL	Certified
FR 4213	680 BHP @ 1800 RPM	-	4153	-

680 BHP Prime Power with 755 BHP overload capability at 1800 RPM.  
600 BHP Prime Power with 675 BHP overhead capability at 1500 RPM.  
For Prime Power duty applicaton.  
CPL: 4153  
KTA19-G4

FS - Fuel System Accessories

**FS4002**



**FS4002 [G]**

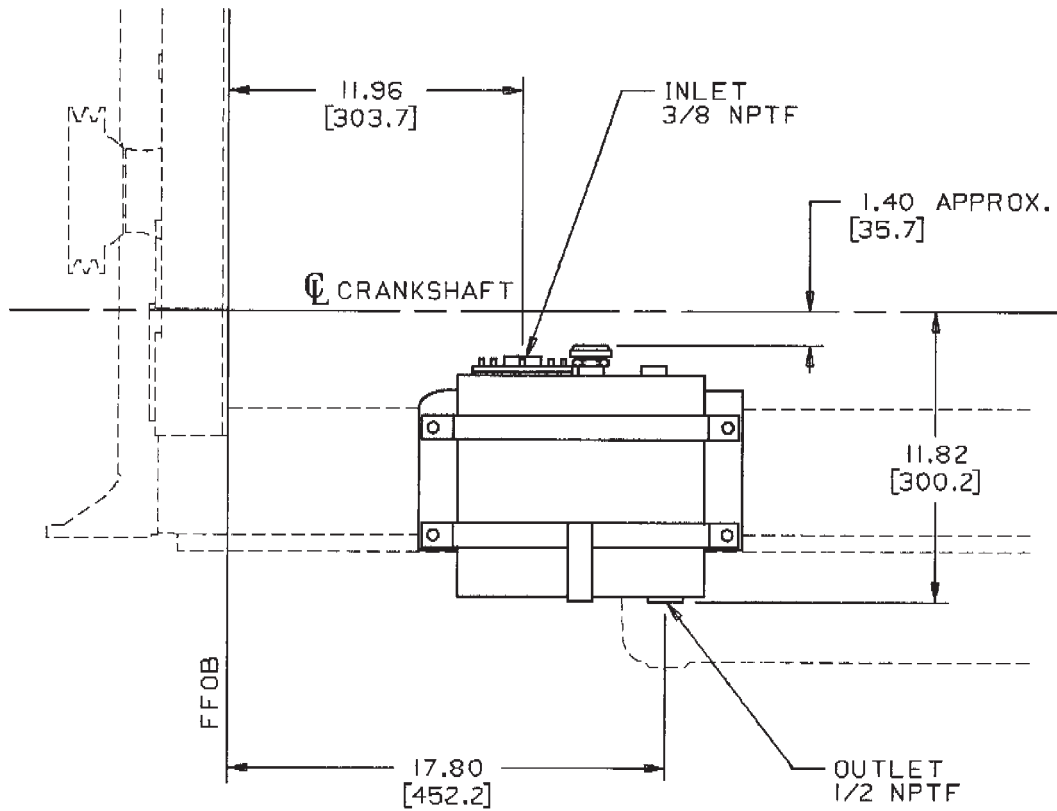
Option #	Description	Flow/Pressure	Fitting Size	Notes	Weight	Value Code
FS 4002	Check Valve	-	-	-	n/a	-

No content option used to select fuel tubing.  
 Check valves in fuel supply and injector drain lines.  
 The fuel level in the fuel supply tank (mounted overhead or elsewhere) must not exceed a height of 2.1 m [7 ft.] above the crankshaft centerline. If fuel level exceeds this height, then a float tank is required.

Check valves contained in FT options.

FS - Fuel System Accessories

**FS4006**



**FS4006 [G]**

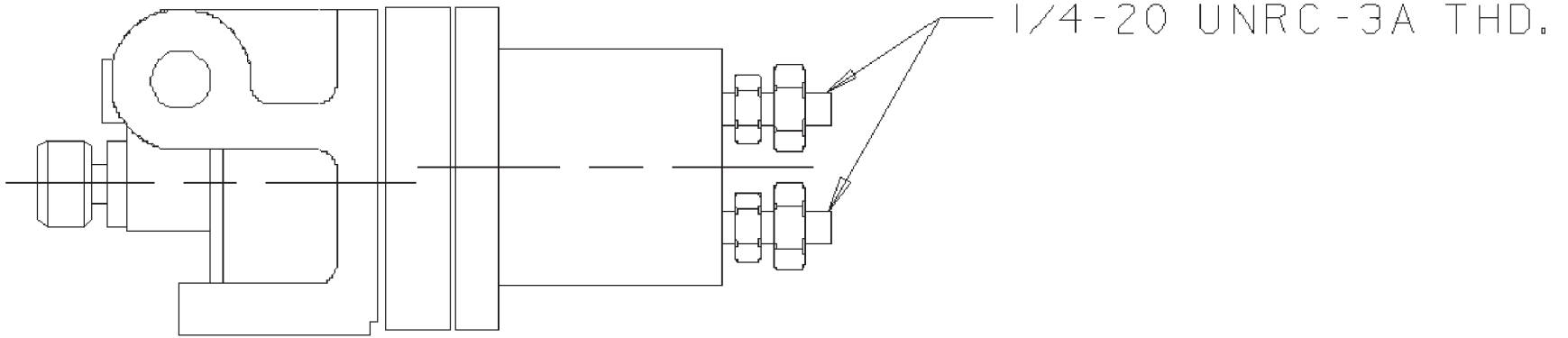
Option #	Description	Flow/Pressure	Fitting Size	Notes	Weight	Value Code
FS 4006	Float Tank	-	-	-	n/a	-

A float tank is required when an auxiliary fuel transfer pump is needed to move fuel from the main fuel supply tank to the engine; or the fuel level in the fuel supply tank (mounted overhead or elsewhere) exceeds the 2.1 m [7 ft.] static height capability of the engine-mounted fuel check valves. When the Cummins supplied float tank is used in a gravity-fed fuel application, the fuel level in the fuel supply tank (mounted overhead or elsewhere) must be at least 0.6 m [2 ft.], but not more than 7.6 m [25 ft.], above the float tank.

Float tank with 5.7 litre [1.5 U.S. gal.] capacity mounted on the oil pan adapter boss below the fuel pump.

FV - Fuel Shut-off Valve

**FV8066**



FV8066 [G]

Option #	Volts/Description	Location	Notes
FV 8066	24 V DC	-	-

24V DC Two terminal, rapid restart fuel shut-off valve. 3.18 mm [1/8 in] N.P.T. outlet. Insulated.

FV - Fuel Shut-off Valve

**FV8075**

fv8075\_mcs

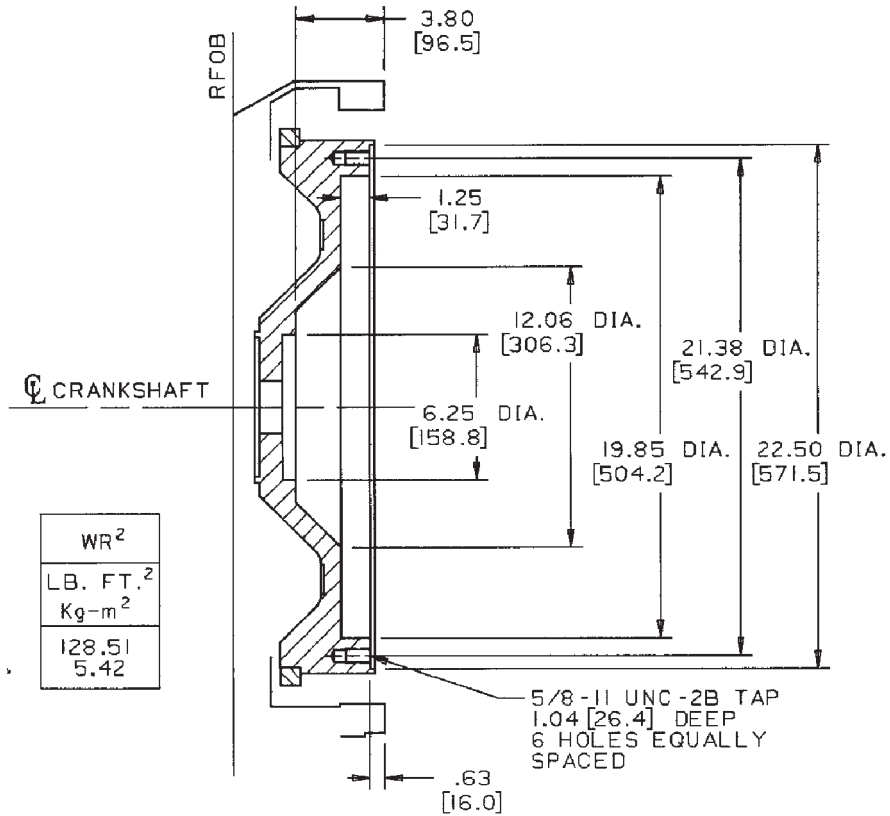
FV8075 [G]

Option #	Volts/Description	Location	Notes
FV 8075	24 V DC	-	-

75V DC Two terminal, rapid restart fuel shut-off valve.  
3.18 mm [1/8 in] N.P.T. outlet.

FW - Flywheel

**FW4001**



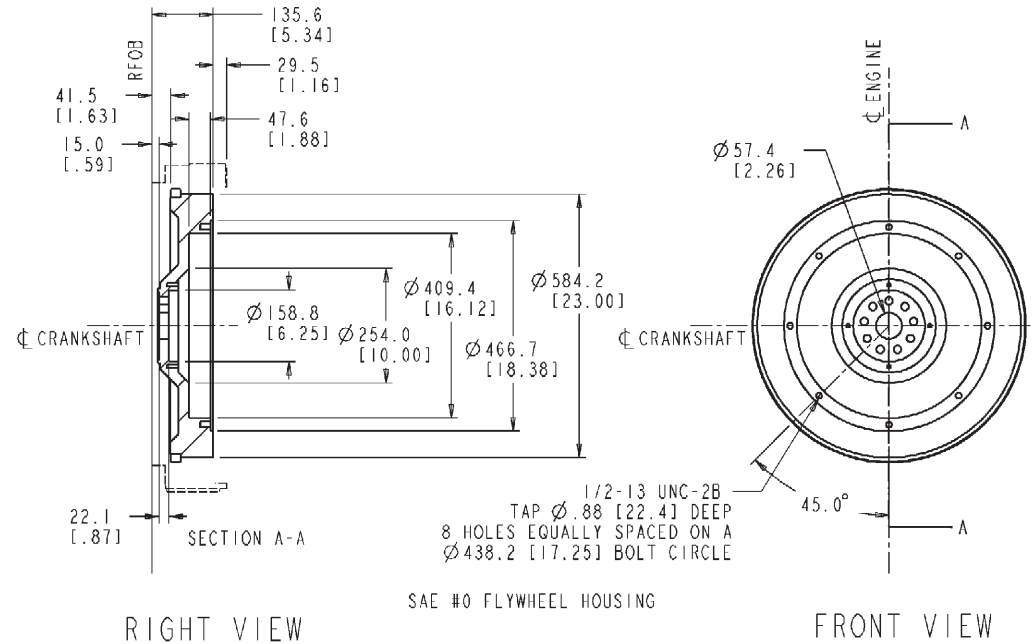
FW4001 [G]

Option #	SAE	Pilot Bearing Bore Dia.	Ring Gear Pitch/Teeth	Indicated Drive	Notes	Weight	Value Code
FW 4001	SAE #0	-	6/8 pitch 142 teeth	-	-	-	-

SAE #0 flywheel and ring gear for mounting SAE #18 571.5 mm [22.5 in.] dia. generator flexible drive disc or with 457.2 mm [18 in.] overcenter clutch. Right hand engine rotation.

FW - Flywheel

**FW4006**



MAX RPM	INERTIA
3500	LB-FT <sup>2</sup>
	Kg-m <sup>2</sup>
	149.41
	6.28

FW4006\_MCS

FW4006 [G]

Option #	SAE	Pilot Bearing Bore Dia.	Ring Gear Pitch/Teeth	Indicated Drive	Notes	Weight	Value Code
FW 4006	SAE #0	-	6/8 pitch 142 teeth	-	-	-	-

SAE #0 flywheel for use with 355.6 mm [14 in.] over center clutch adaptation, and SAE #0 flywheel housing. Includes starter ring gear for right hand engine rotation.

**Use with Twin-Disc series 1850 converters, Clark 19BKH Industrial converters, Twin-Disc MG514 Marine gear and Capitol HP 6900, HP 7700, and HP 28000 Marine Gears.**

HD - Auxiliary Pump Drive

HD4067

**(No Graphics Required)**

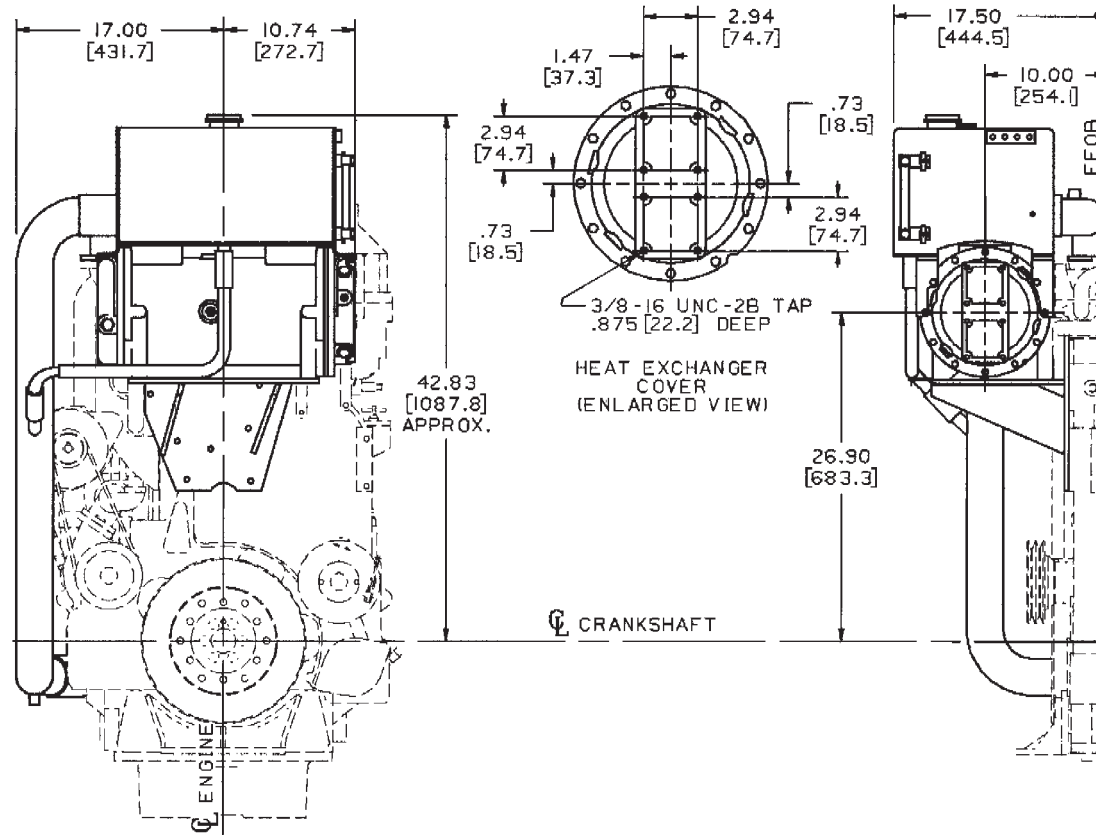
HD4067 [G]

Option #	Description	Mfg./Model	Flange Type	Shaft Type	Notes	Weight	Value Code
HD 4067	Cover Plate	-	-	-	-	-	-

Cover plate for rear of front gear cover when no auxiliary pump drive provision is specified. No idler gear. No addition of auxiliary pump drive possible.

HX - Heat Exchanger

**HX4073**



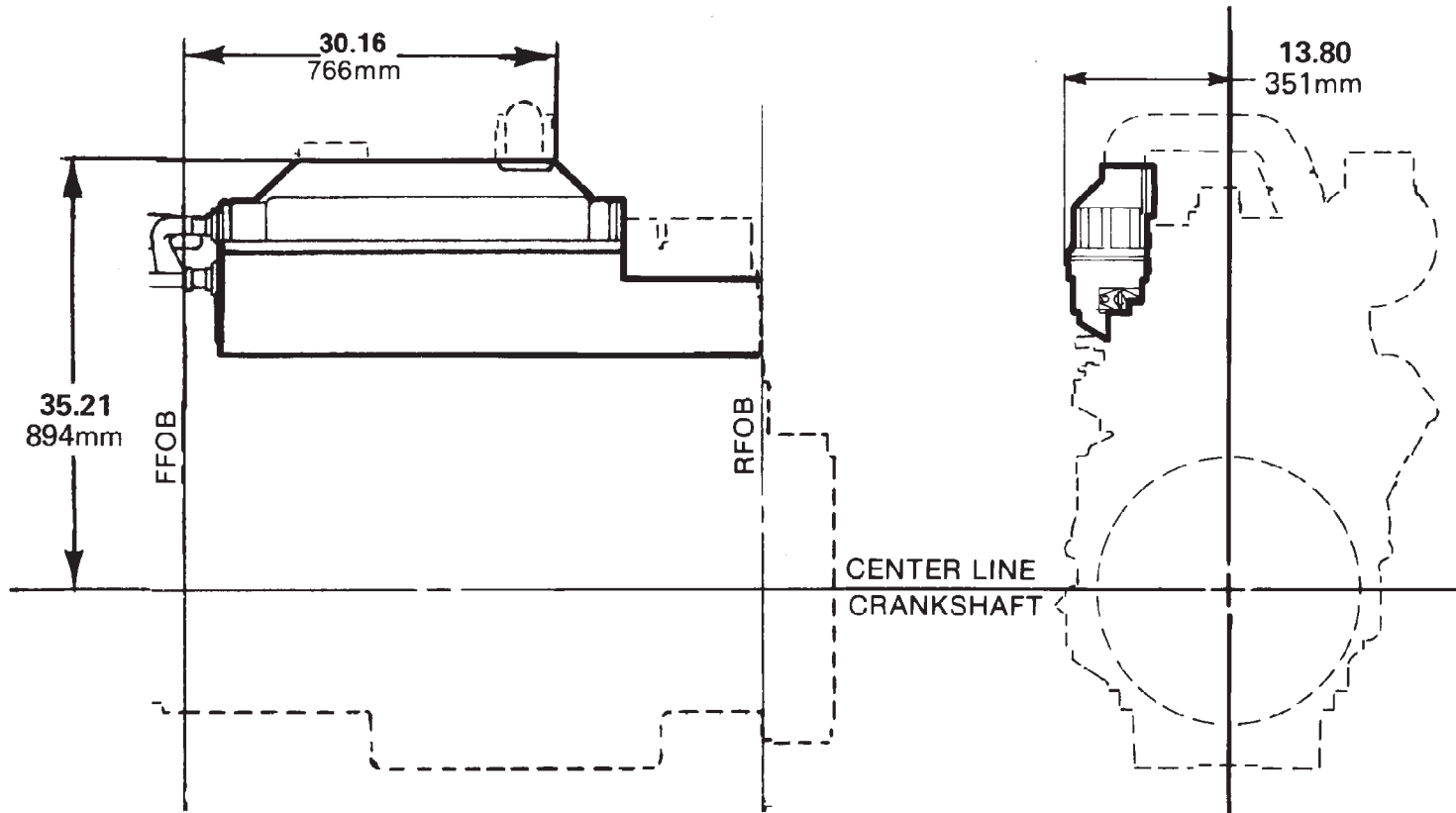
HX4073 [G]

Option #	Description	Notes
HX 4073	Heat Exchanger	Mounted across front of engine

Heat exchanger with 210 copper-nickel tube bundle, mounted across front of engine. Includes sight glass and mounted expansion tank.

IM - Air Intake Manifold

**IM4006**



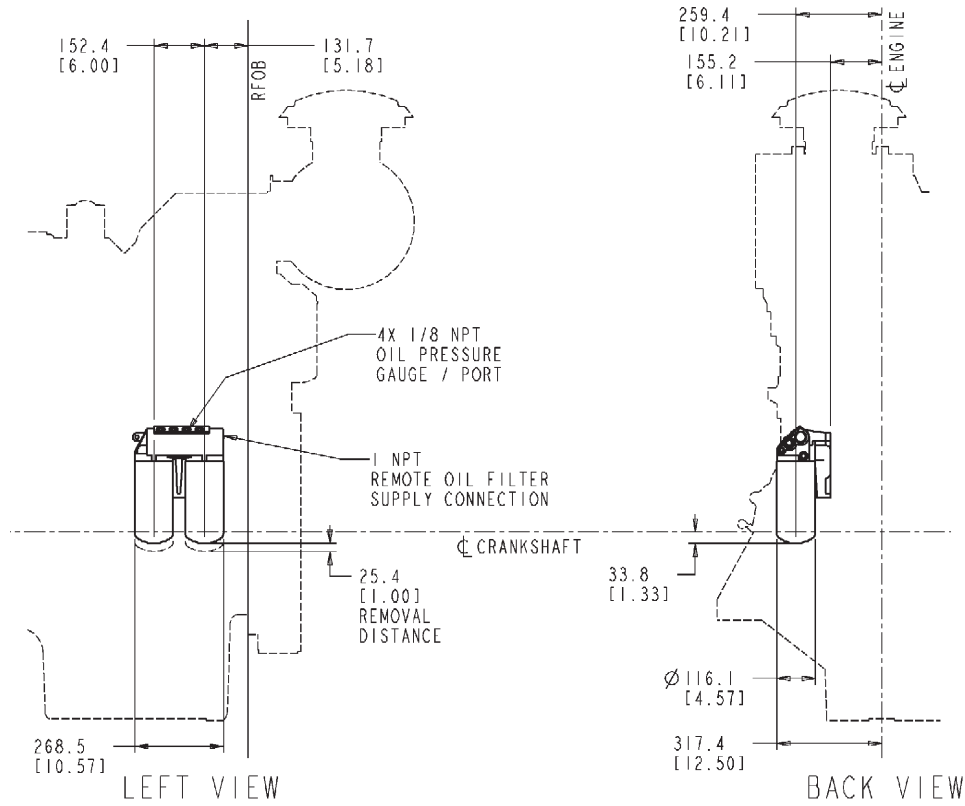
IM4006 [G]

Option #	Description/Dia	Orientation/Location	Notes
IM 4006	Air Intake Manifold	-	-

Aftercooled Intake Manifold.  
For use on 1 piece gear cover engines.

LF - Lube Oil Filter

**LF4011**



LF4011\_MCS

LF4011 [G]

Option #	Type	Hose Length	Location	Notes	Weight	Value Code
LF 4011	Dual spin-on cartridge	-	High/rear of block/F.P. side	-	-	-

Dual spin-on cartridge oil filters mounted high and to rear of block on fuel pump (port) side of engine. For use with starter mounted on exhaust side of engine.

LF - Lube Oil Filter

LF4050

If4050\_mcs

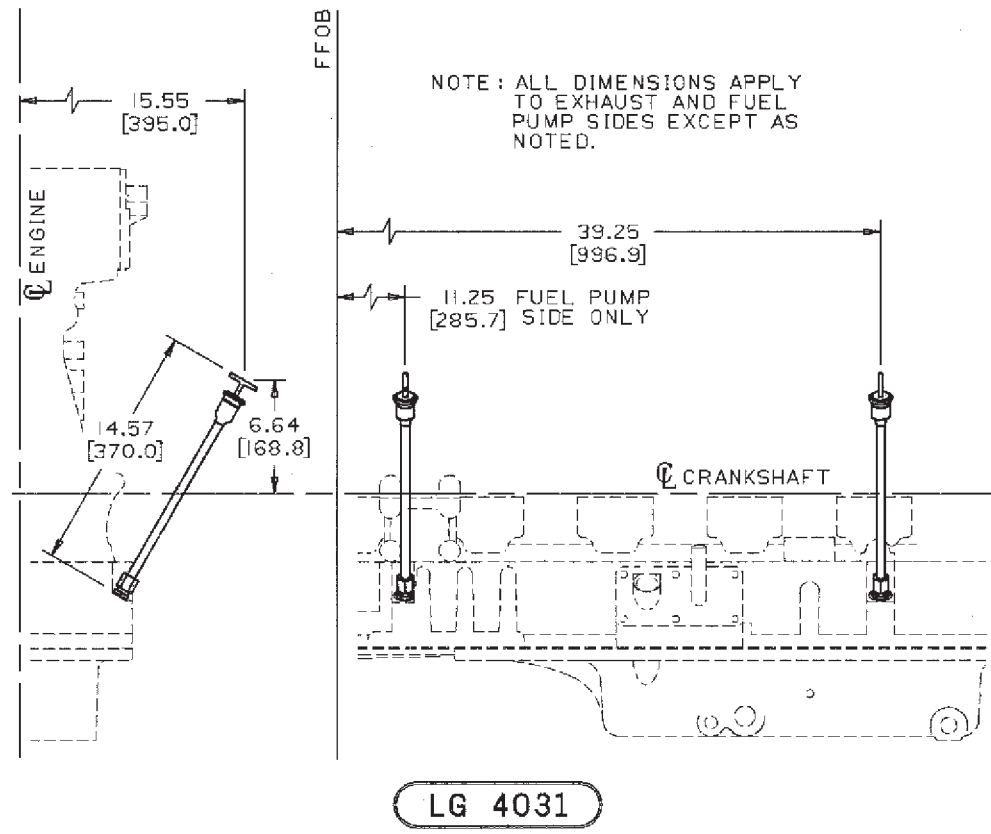
LF4050 [G]

Option #	Type	Hose Length	Location	Notes	Weight	Value Code
LF 4050	Dual spin-on full flow	-	High rear F.P. side	Full flow	-	-

Dual spin-on full flow oil filters  
 Mounted high and to the rear on fuel pump side.  
 For use with starter mounted on right side (exhaust side) of engine.  
 Filter model: LF 670

LG - Oil Level Gauge

**LG4031**



LG4031 [G]

Option #	Handle Orientation	Location of Entry into Oil Pan	Use With	Power Angle
LG 4058	-	-	-	-

14.3 in. tube and dipstick combination.

Calibrated for 0 deg. power angle and 0 deg. tilt.

Acceptable locations verses oil pans are:

- (1) Front oil pan adapter boss fuel pump side used with shallow front or shallow center front sump oil pans.
- (2) Rear oil pan adapter boss fuel pump side used with shallow

rear oil pan.

LG - Oil Level Gauge

**LG4058**

lg4058\_mcs

LG4058 [G]

Option #	Handle Orientation	Location of Entry into Oil Pan	Use With	Power Angle
LG 4058	-	-	-	-

Oil gauge tube and dipstick combination located in hand hole cover mounted on fuel pump side of engine.

**For use with Deep Rear Sump Oil Pan.**

**14.1 in. Tube & Dipstick combination.**

LT - Literature

LT4002

# (No Graphics Required)

LT4002 [G]

Option #	Description
LT 4002	Literature

KTA-19G1/G2 Drive Engine Operational Manual.

Includes:

- Engine Parts Catalog
- Operation and Maintenance Manual.

Supplied in kit.

LT - Literature

LT4027

# (No Graphics Required)

LT4027 [G]

Option #	Description
LT 4027	Literature

KTA-19G3 G-Drive Engine Operational Manual.

Includes:

- Engine Parts Catalog
- Operation and Maintenance Manual.

Supplied in kit.

LT - Literature

LT4030

# (No Graphics Required)

LT4030 [G]

Option #	Description
LT 4030	Literature

KTA-19G4 G-Drive Engine Operational Manual.

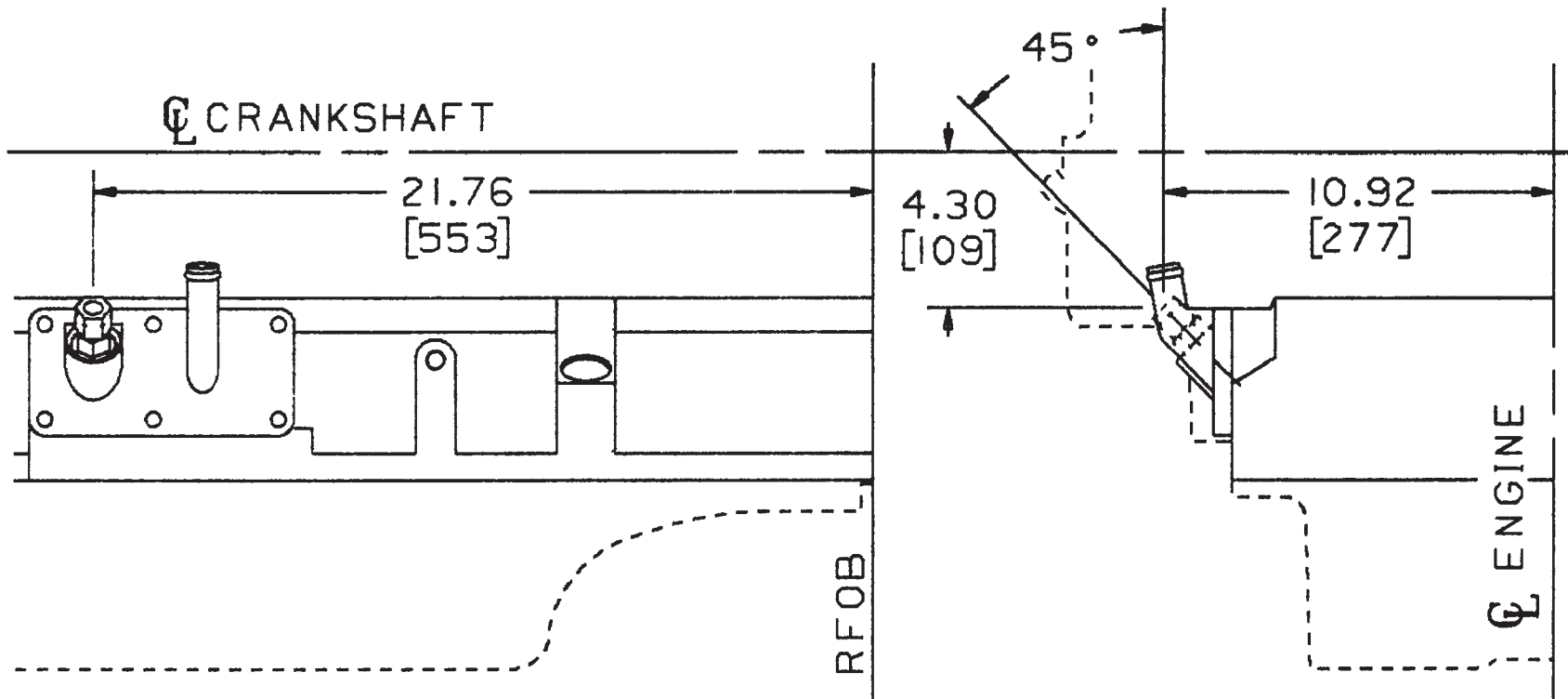
Includes:

- Engine Parts Catalog
- Operation and Maintenance Manual.

Supplied in kit.

OB - Oil Level Gauge Location

OB4024



OB4024 [G]

Option #	Location	Fill Type	With Dipstick	Notes	Weight	Value Code
OB 4024	Hand Hole cover on fuel pump side	-	LG 4028 or LG 4058	No content Option	n/a	-

Dipstick located in hand hole cover on **fuel pump (port) side** of engine.  
No content option.

OB - Oil Level Gauge Location

OB4029

**(No Graphics Required)**

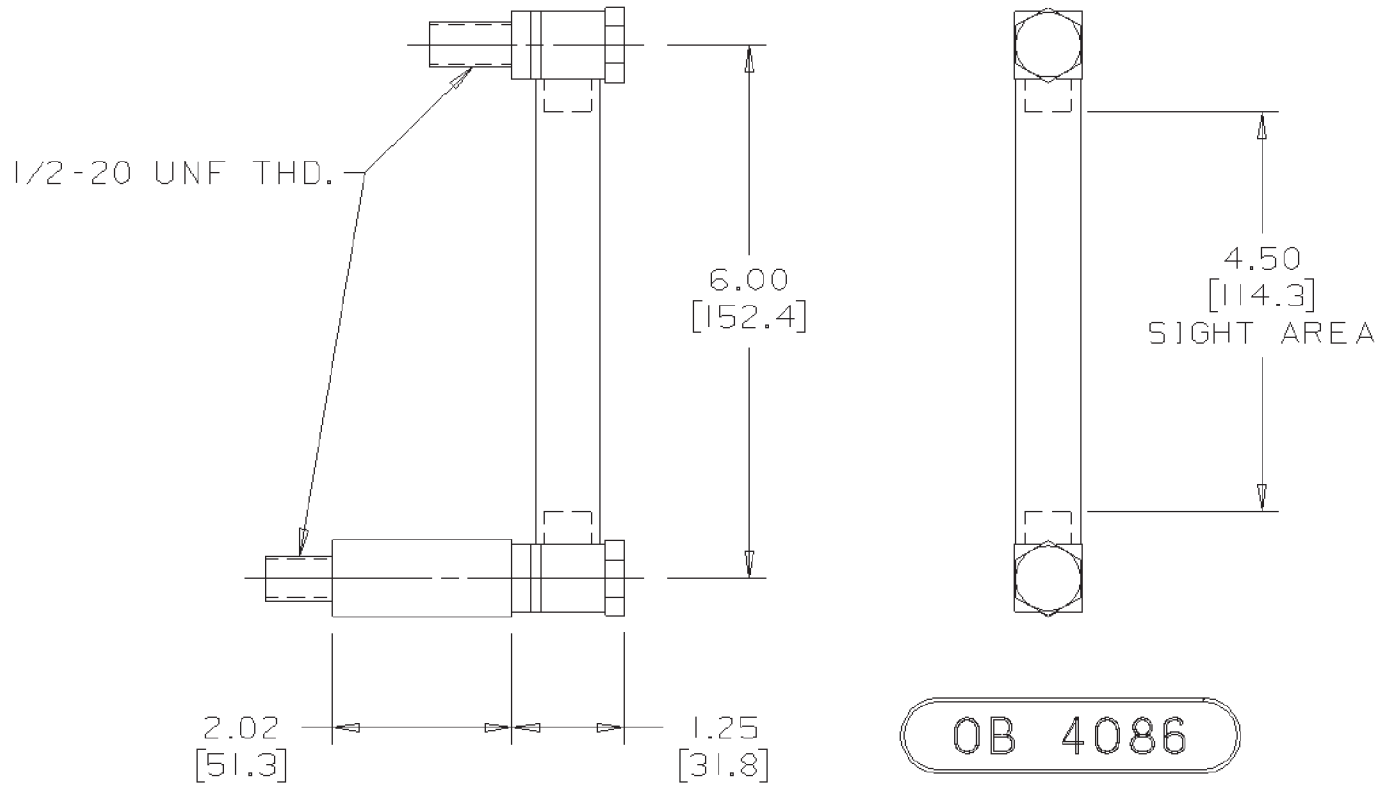
OB4029 [G]

Option #	Location	Fill Type	With Dipstick	Notes
OB 4029	Rear Oil Pan on fuel pump side	N/A	-	-

Dipstick located in the rear oil pan adapter boss fuel pump side.

OB - Oil Fill Arrangement

**OB4086**



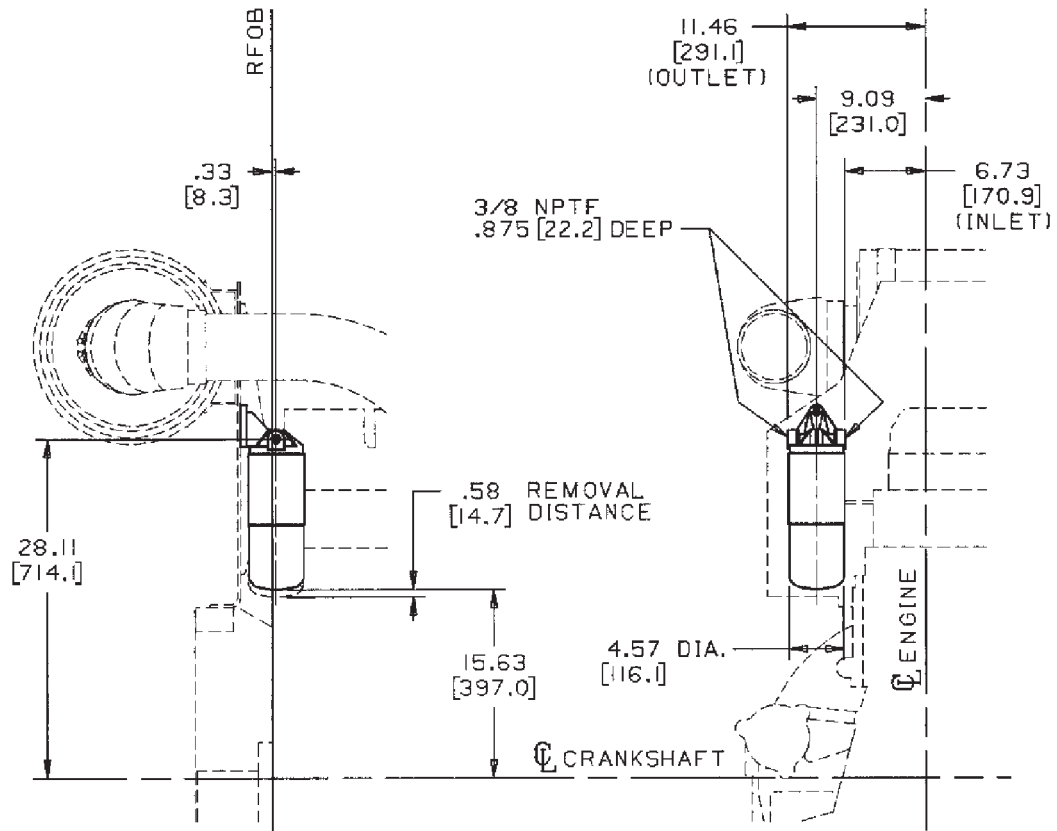
OB4086 [G]

Option #	Location	Fill Type	With Dipstick	Notes	Weight	Value Code
OB 4086	Oil Pan	-	-	-	n/a	-

Oil gauge sight glass mounted only on **fuel pump (port) side** of engine to determine lubricating oil level when the engine is operating.

OF - Oil Bypass Filter

**OF4003**



OF4003 [G]

Option #	Element	Mounted	Notes	Weight	Value Code
OF 4003	Spin-on by-pass	Front side of Air Cleaner Bracket	-	-	-

All Marine Auxiliary engines used in generator set applications (except standby) require the use of a by-pass oil filter. If customer supplied, it must meet Cummins Engineering Standard 10,547. Spin-on by-pass oil filter mounted on **front side (engine side)** of air cleaner bracket exhaust side of engine.

**OF - Oil By-pass Filter**

**OF4008**

of4008\_mcs

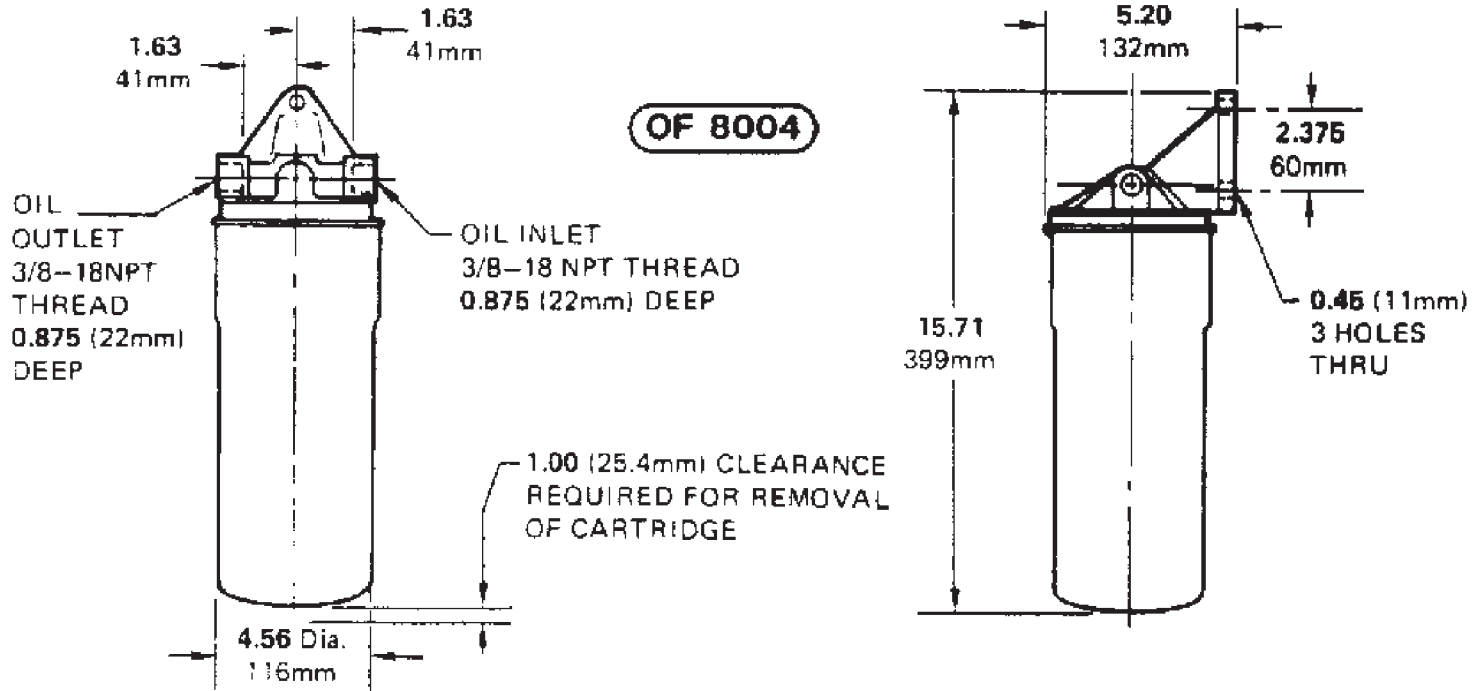
**OF4008 [G]**

Option #	Element	Mounted	Notes	Weight	Value Code
OF 4008	Spin-on by-pass	Back side of air cleaner bracket	-	-	-

All Marine Auxiliary engines used in generator set applications (except standby) require the use of a by-pass oil filter.  
 If customer supplied, it must meet Cummins Engineering Standard 10,547.  
 Spin-on by-pass oil filter mounted on back side (flywheel side) of air cleaner bracket exhaust side and below air cleaner.

OF - Oil By-pass Filter

OF8004



OF8004 [G]

Option #	Element	Mounted	Notes	Weight	Value Code
OF 8004	Spin-on by-pass	Vertical mounting only by customer	Supplied in kit	-	-

Spin-on cartridge type by-pass oil filter assembly. Supplied in kit for vertical mounting only by customer.

## OP - Oil Pan

OP4019
--------

op4019\_mcs

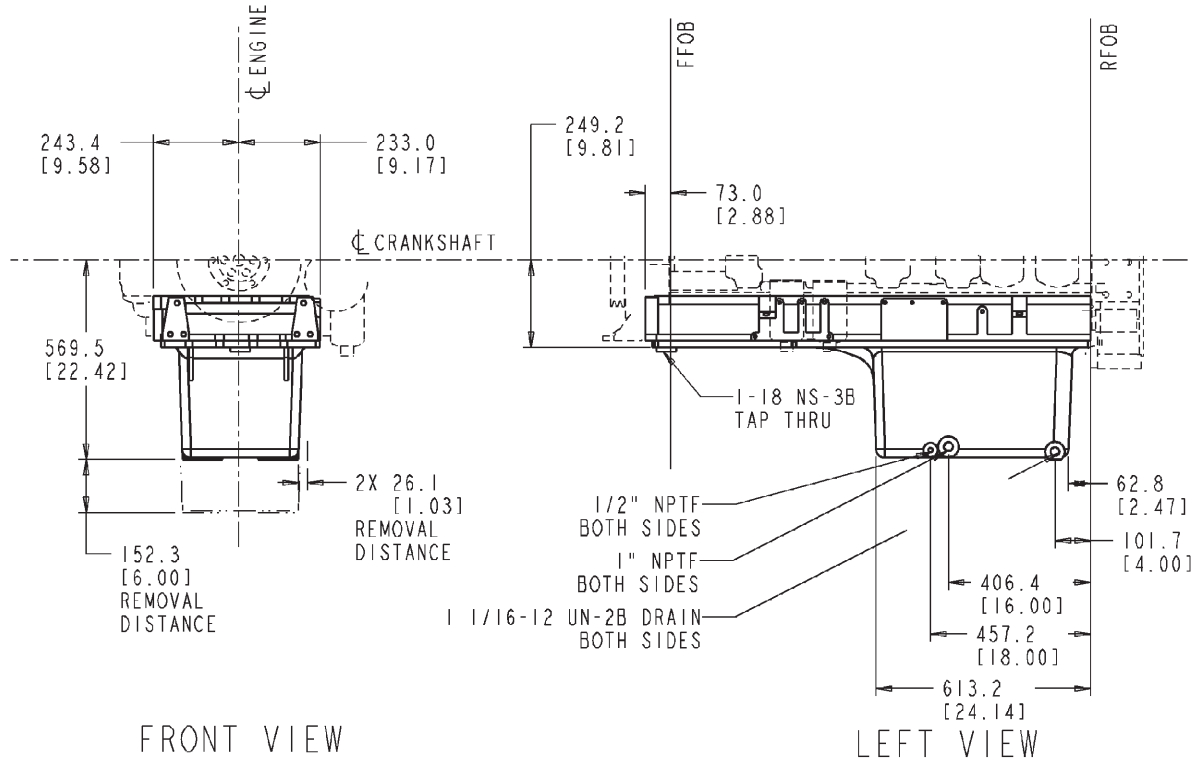
## OP4019 [G]

Option #	Type/Material	Drain Location	Angularity	Capacity
OP 4019	Cast Aluminum	Both Sides	30 deg.	High level: 38 litre [10 U.S. gal.] Low level: 32.3 litre [8.5 U.S. gal.]

Cast aluminum shallow rear sump oil pan.  
Includes oil pan adapter.  
Oil pan has the oil drain and by-pass filter return on both sides.

OP - Oil Pan

**OP4037**



**OP4037\_MCS**

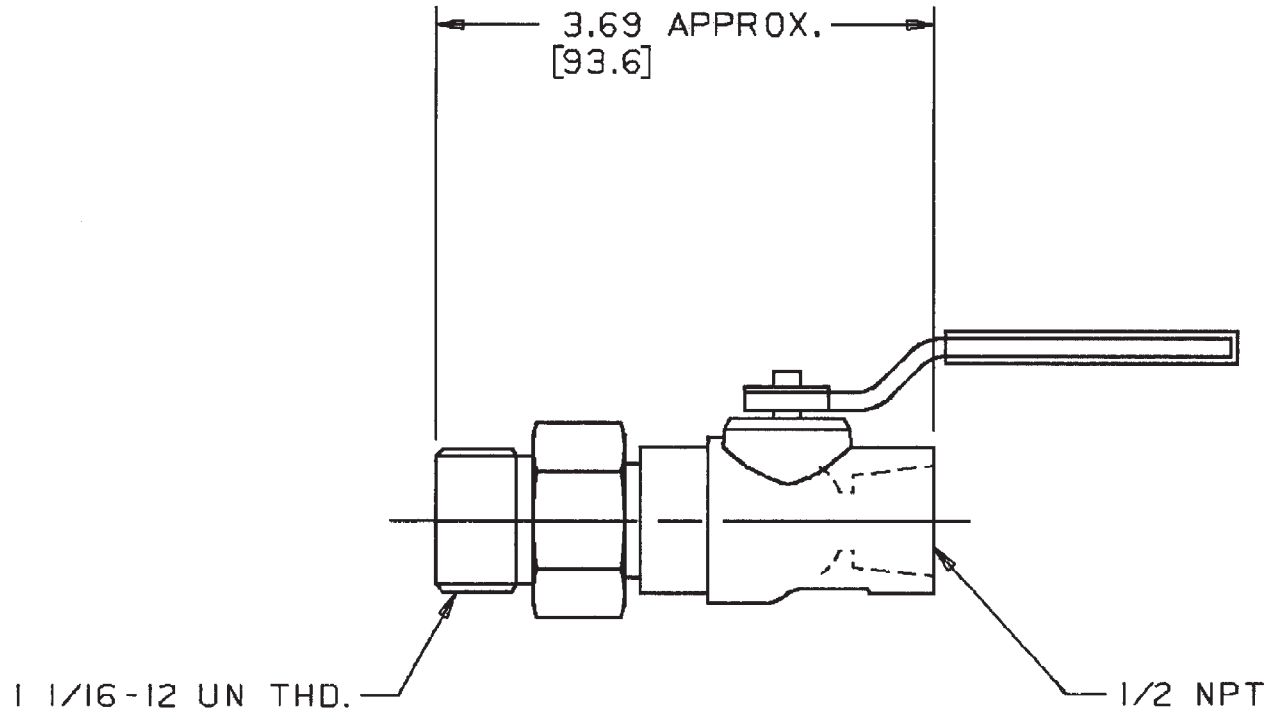
**OP4037 [G]**

Option #	Type/Material	Drain Location	Angularity	Capacity	Notes	Weight	Value Code
OP 4037	Deep rear sump/ Cast aluminum	Both Sides	45 deg.	High: 71.9 litre [19 U.S. gal.] Low: 64.4 litre [17 U.S. gal.]	-	-	-

Cast aluminum deep rear sump oil pan for marine applications.  
Includes oil pan adapter.  
Oil pan has the oil drain and by-pass filter return on both sides.

PS - Scavenge Pump

PS8012



PS8012 [G]

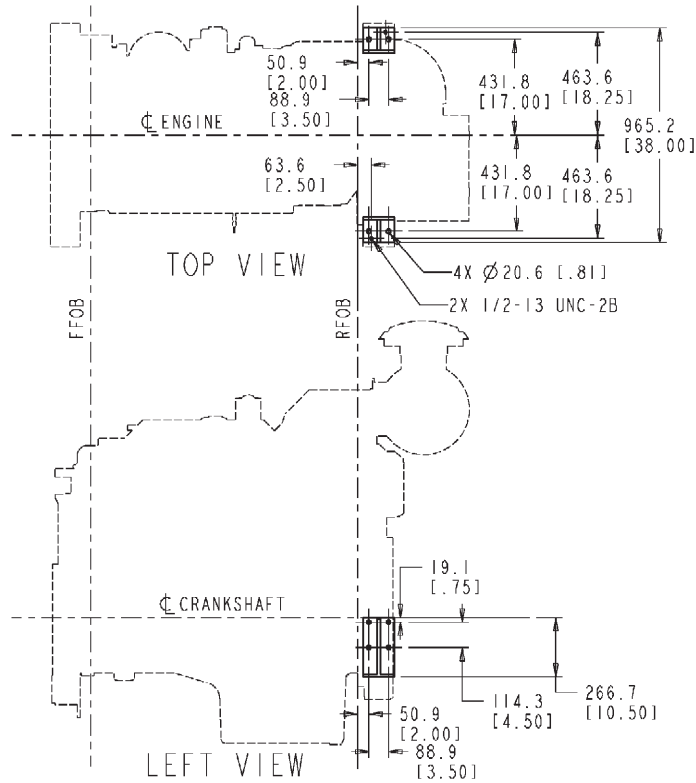
Option #	Description	Used With	Notes
PS 8012	Scavenge Pump	PS 8006	Mounted

Oil pan drain valve.

Includes 1 1/16 - 12 UN-2B to 1/2 NPT reducer and a 1/2 NPT ball valve.

RE - Rear Engine Support

**RE4001**



RE4001\_MCS

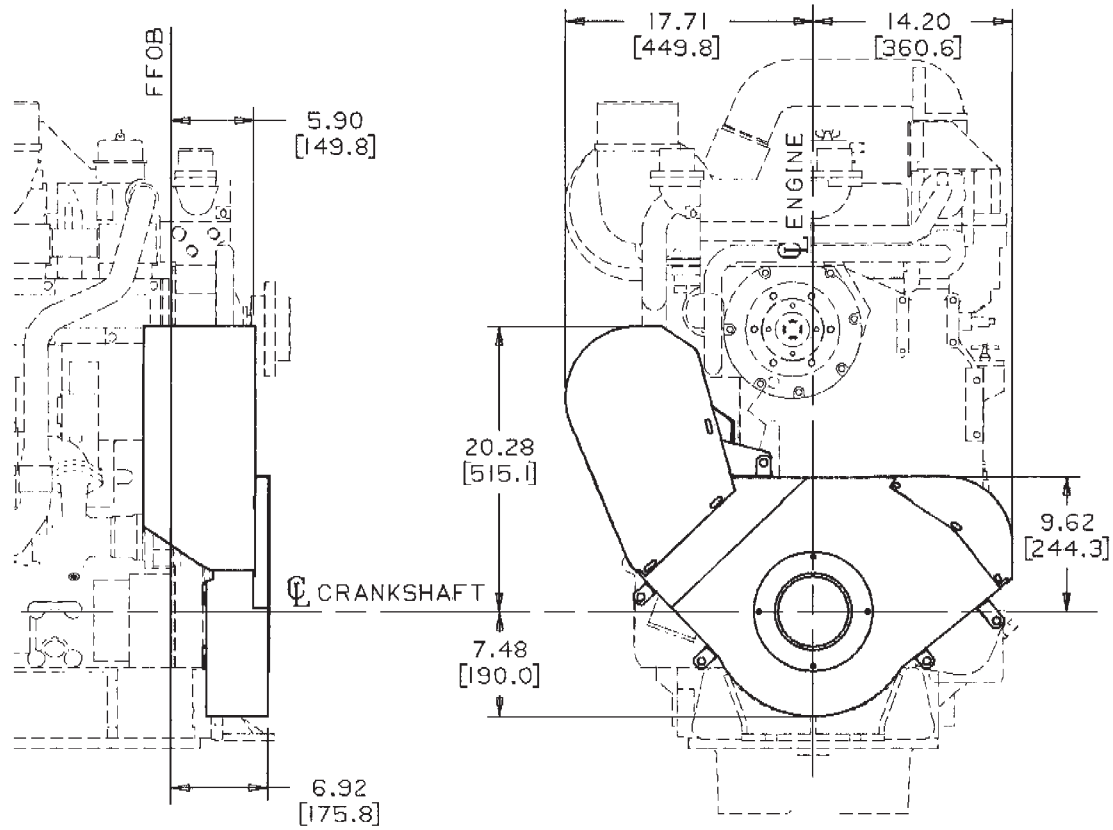
RE4001 [G]

Option #	Description	Notes	Weight	Value Code
RE 4001	Rear Engine Support	Less marine gear	-	-

Rear engine mounting brackets with lifting eyes for SAE #0 flywheel housing. Brackets provide 863.6 mm [34 in.] mounting centers.

SG - Guard Package

**SG4003**



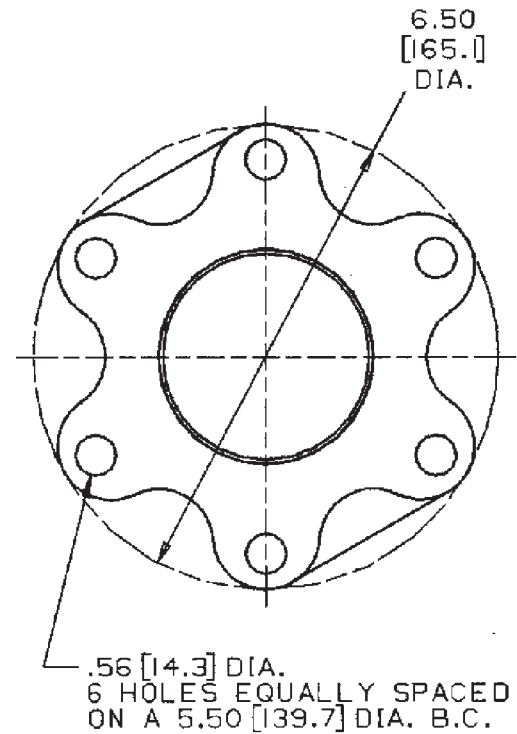
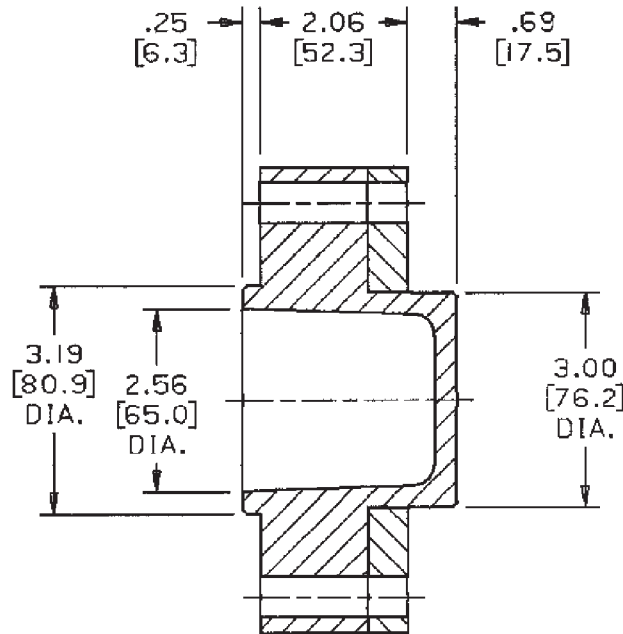
SG4003 [G]

Option #	Description	Notes	Weight	Value Code
SG 4003	Damper guard	-	n/a	-

Damper guard for: dual vibration damper, timing disk and accessory drive pulley, or alternator.  
Use with cast iron or aluminum front gear cover, with heat exchanger or remote cooling.

SP - Fan Spacer

**SP8319**



**SP8319 [G]**

Option #	Description	Thickness	Bolt Circle Dia.	Notes	Weight	Value Code
SP 8319	Fan Spacer	52.3 mm [2.06 in.]	139.7 mm [5.5 in.]	76.2 mm [3.00 in.] Fan Pilot	n/a	-

- Do not use fan spacer option with Cummins supplied radiator cooling system. The fan spacer is included in the radiator option.
- Includes grade 8 mounting capscrews.

Fan spacer providing a total 52.3 mm [2.06 in.] of fan spacing. Fits fan hubs with 80.8 mm [3.18 in.] bore has 76.2 mm [3.0 in.] fan pilot and 6 mounting holes on 139.7 mm [5.5 in.] bolt circle.

SP - Fan Spacer

**SP8703**

sp8703\_mcs

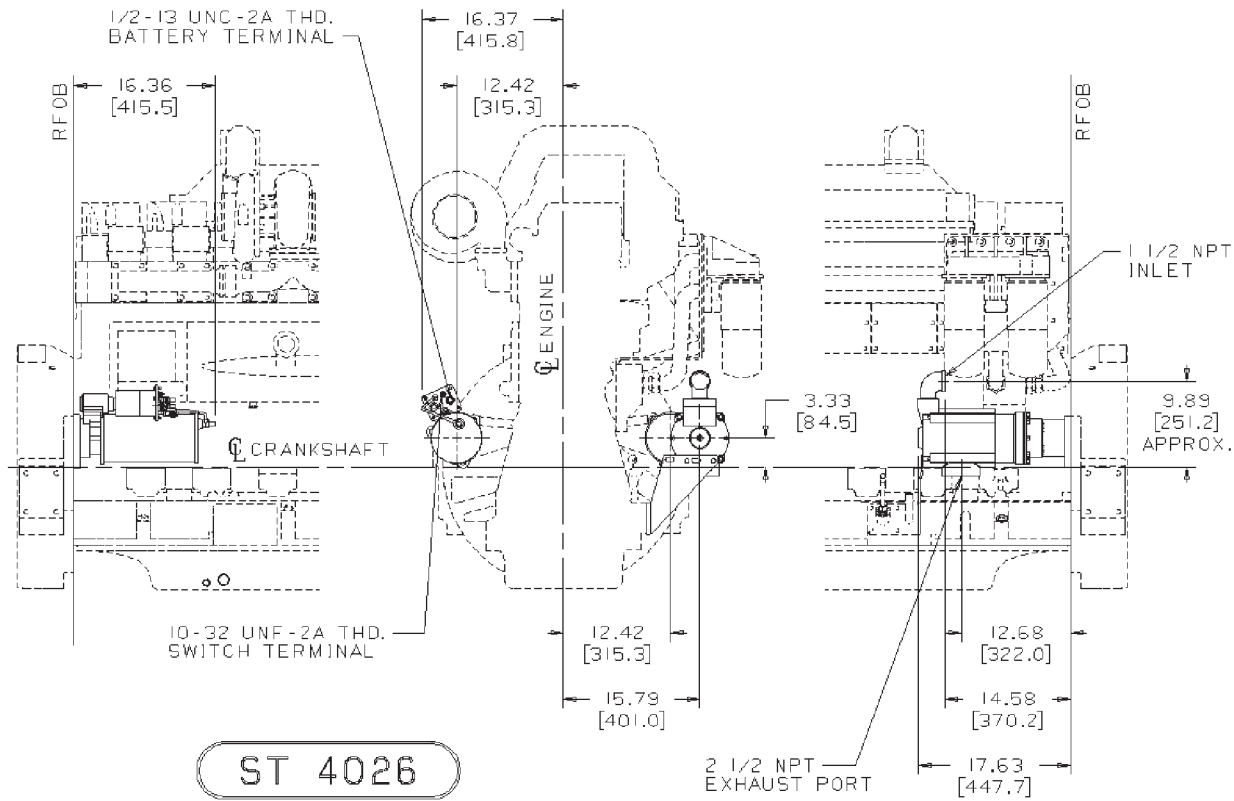
SP8703 [G]

Option #	Description	Thickness	Bolt Circle Dia	Notes
SP 8703	Fan Spacer	-	-	-

Grade 8 capscrews 1/2 -13 x 3.75 in. with lock washers for use with steel fan.

ST - Starting Motor

**ST4026**



ST4026 [G]

Option #	Voltage/kW	Mfg./Model	Pinion Gear Pitch	Notes
ST 4026	(1) 24 V (1) Air	(1) Delco Remy/ 50 MT 400 (1) Ingersoll-Rand/Model SS815	(2) 6/8	Includes support bracket for air starter

Dual starter arrangement consisting of:

- One 24V Delco Remy 50-MT400 electric starter with ground strap.
- One Ingersoll-Rand model SS815 air starter. Positive engagement.

Insulated, CW rotation, positive engagement. Mounts on right side of engine in low No. 1 quadrant.

## K19G

Mounts on left side of engine in low No. 4 quadrant.  
Includes support bracket.

ST - Starting Motor

**ST8048**

st8048\_mcs

**ST8048 [G]**

Option #	Voltage/kW	Mfg/Model	Pinion Gear Pitch	Notes
ST 8048	24 V	Delco-Remy/ 50 MT 400	-	-

24V Delco-Remy (50MT400) starter with ground strap. Insulated, cw rotation, positorque drive and 307.5 deg. solenoid position. Mounts on exhaust side of engine.

TB - Turbocharger Arrangement

TB4025

tb4025\_mcs

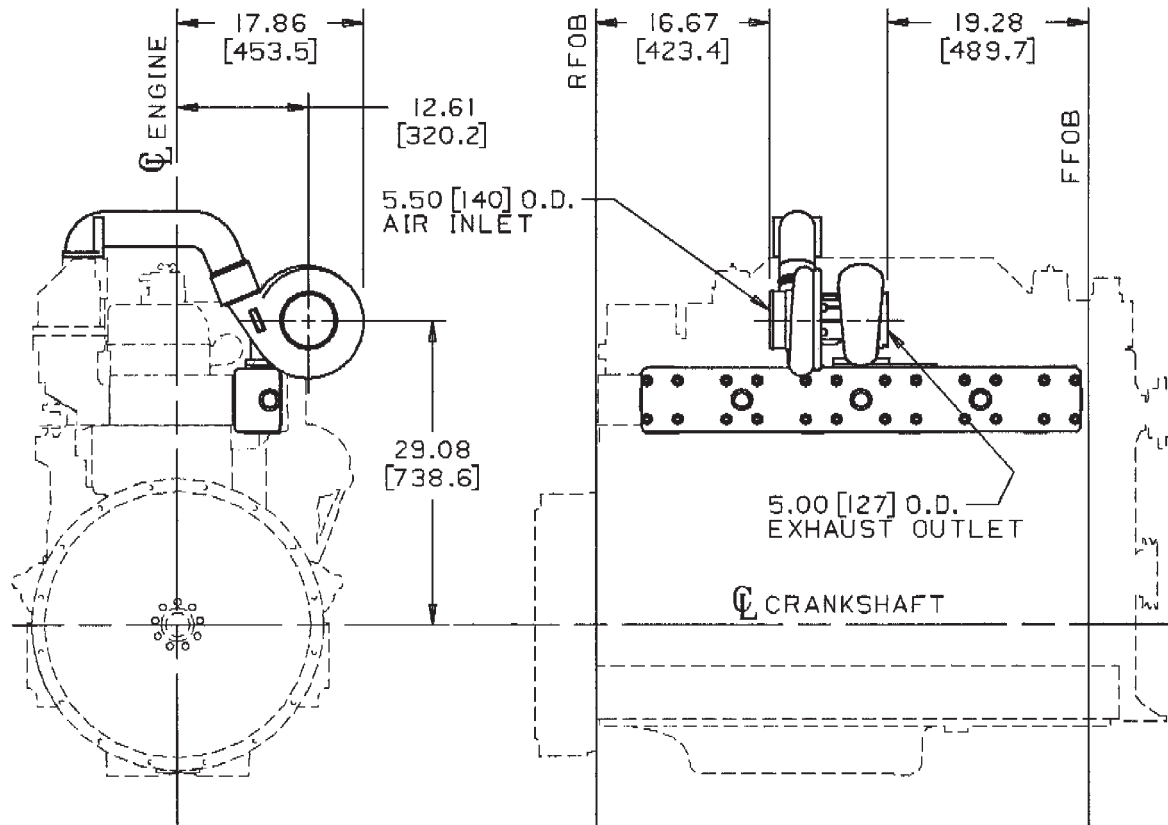
TB4025 [G]

Option #	Mount/Exhaust Outlet Location	Wastegate	Water-Cooled	Notes
TB 4025	Top Mounted/ Front Out Exhaust	-	-	-

Top mounted with front out dry exhaust. Includes non-premium exhaust manifold mounting hardware.  
 Provisions for preheating intake air.

TB - Turbocharger Arrangement

**TB4032**



TB4032 [G]

Option #	Mount/Exhaust Outlet Location	Wastegate	Water-Cooled	Notes
TB 4032	Top Mounted / Front Out Exhaust	-	-	-

Wet exhaust manifold and air crossover with mounting for top mounted turbo with front out exhaust.

TB - Turbocharger Arrangement

TB4046

tb4046\_mcs

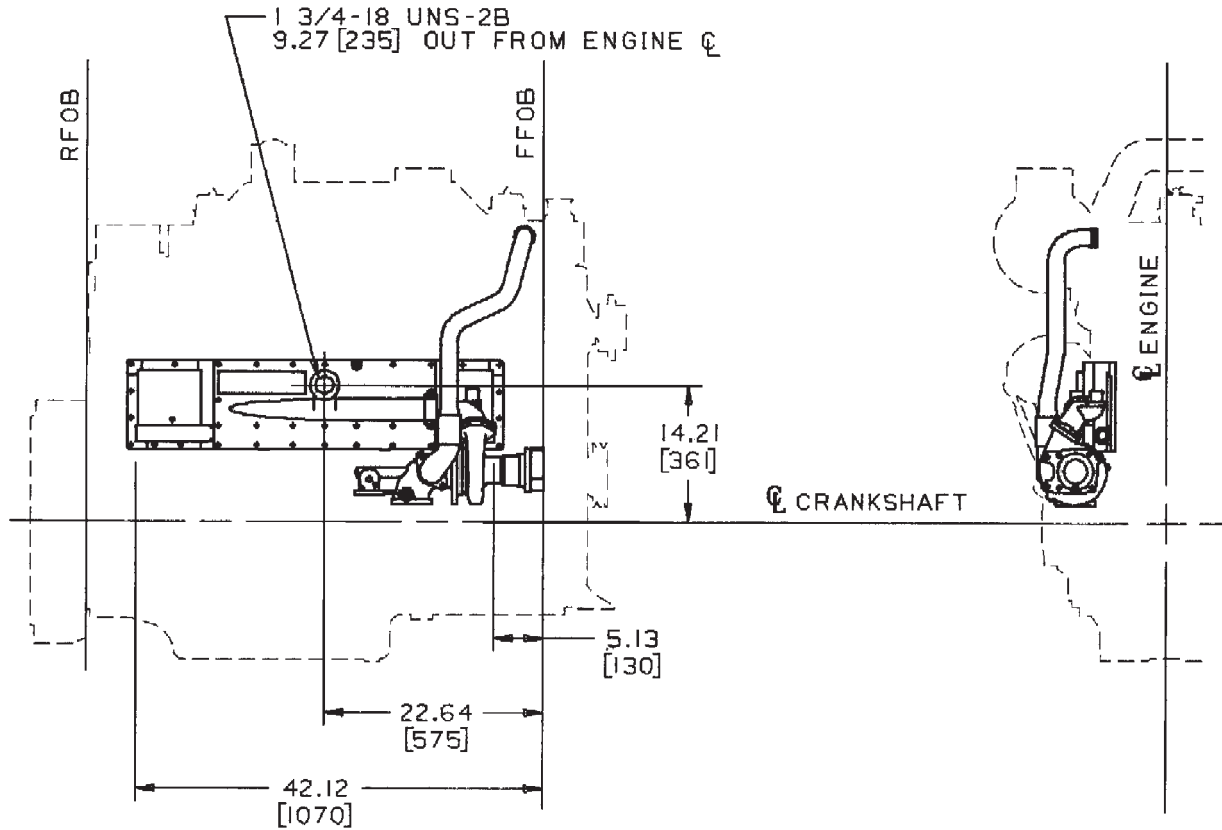
TB4046 [G]

Option #	Mount/Exhaust Outlet Location	Wastegate	Water-Cooled	Notes
TB 4046	Top Mounted/ Front Out Exhaust	-	-	-

Top mounted with front out dry exhaust. Includes high temp exhaust manifold and premium mounting hardware.

TC - Torque Converter

**TC4027**



TC4027 [G]

Option #	Description	Mounting Location	Coolant Flow
TC 4027	Torque Converter	-	-

Cast iron engine oil cooler for use without mounted torque converter cooler. Use with oil filters on fuel pump (port) side of engine.

VB - Vibration Isolators

**VB4002**

vb4002\_mcs

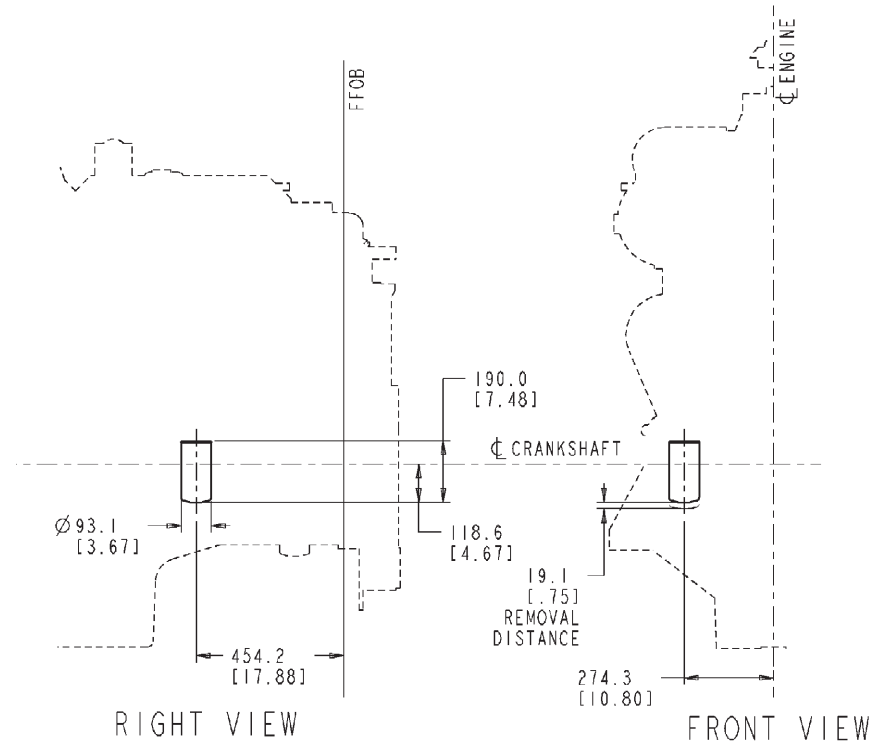
VB4002 [G]

Option #	# of Isolators	RTD Wgt Per Isolator
VB 4002	6	1044 kg [2300 lb]

Set of six spring-type vibration isolators for installation between the subbase and floor.  
Rated at 1044 kg [2300 lb.] per isolator.  
Supplied in kit.

WF - Corrosion Resistor

**WF4001**



**WF4001\_MCS**

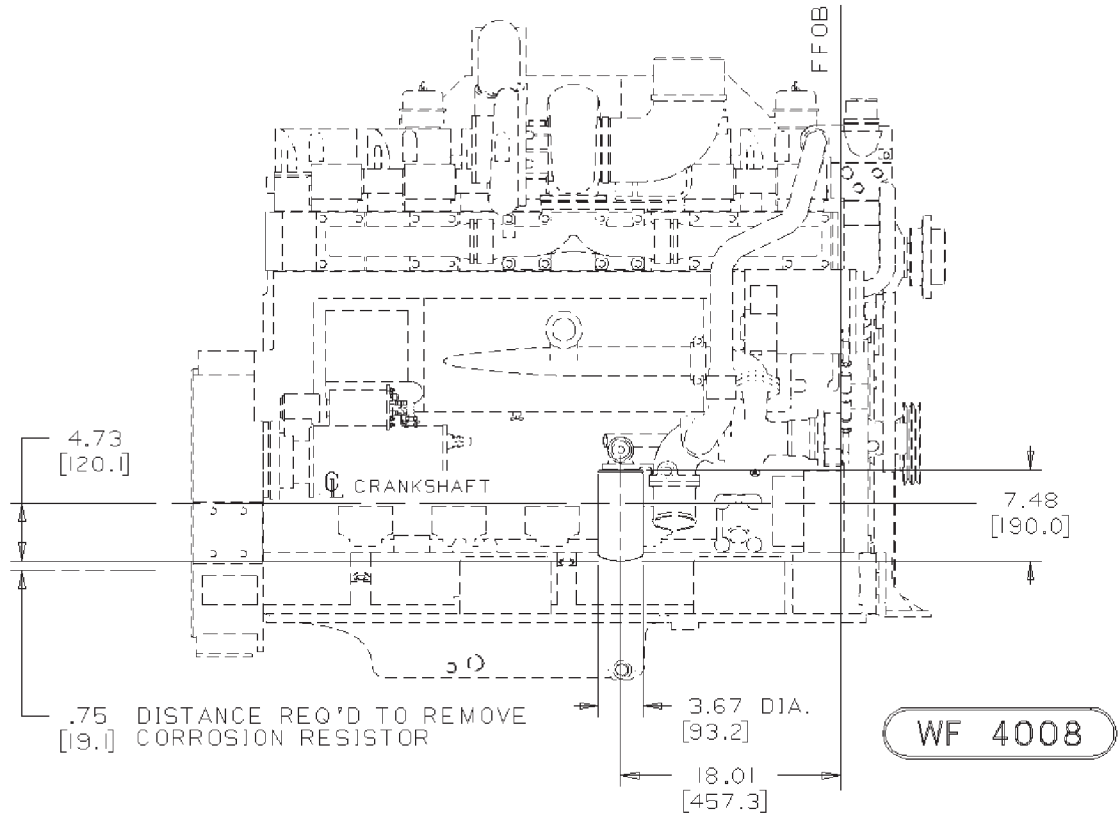
**WF4001 [G]**

Option #	Supplier/Type	Mounting	DCA4 Plus Units	Notes	Weight	Value Code
WF 4001	Fleetguard	Vertically on Water Pump Housing	23	-	-	-

Single spin-on cartridge (23 units DCA4 Plus) mounted vertically on water pump housing.  
 Sized for coolant system capacity of 70 -131 litre [18.4 - 34.5 U.S. gal.] for heat exchanger cooling systems.

WF - Corrosion Resistor

**WF4008**



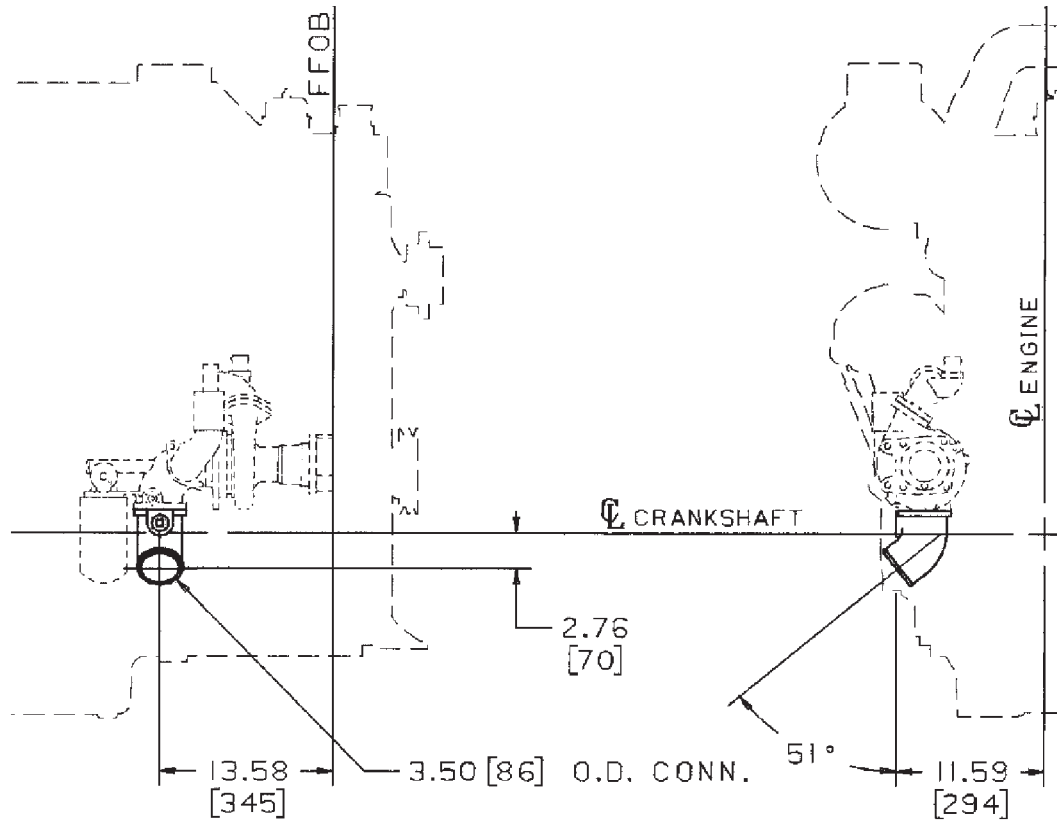
**WF4008 [G]**

Option #	Supplier/Type	Mounting	DCA4 Plus Units	Notes	Weight	Value Code
WF 4008	Fleetguard	Vertically on Water Pump Housing	43	-	-	-

Spin-on corrosion resistor (23 units of DCA4 Plus) mounted vertically on water pump.  
 Sized for a coolant system capacity of 130-244 litre [34.4-64.5 U.S. gal.].  
 Plus one 20 unit container of DCA4 Plus inhibitor supplied in kit.  
 Total of 43 units of DCA4 Plus.

WI - Water Inlet Connection

WI4004



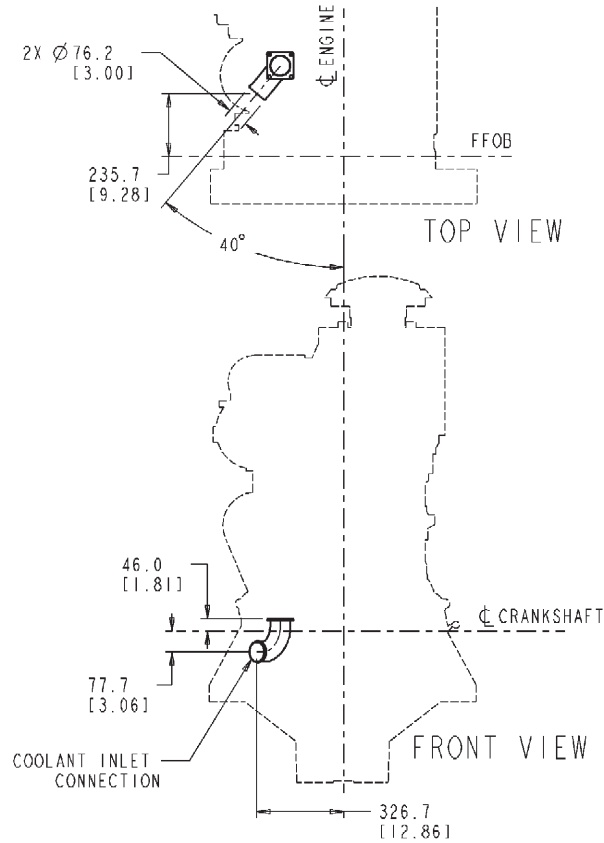
WI4004 [G]

Option #	Inlet O.D.	Orientation	Notes	Weight	Value Code
WI 4004	88.9 mm [3.5 in.]	Down & Away from engine at 51 deg.	-	-	-

88.9 mm [3.5 in.] water inlet connection pointing down and away from engine at 51 deg.

WI - Water Inlet Connection

**WI4005**



**WI4005\_MCS**

**WI4005 [G]**

Option #	Inlet O.D.	Orientation	Notes	Weight	Value Code
WI 4005	76.2 mm [3 in.]	Forward & away from engine at 40 deg.	-	-	-

76.2 mm [3 in.] water inlet connection pointing forward and away from engine at 40 deg.  
 For use with heat exchanger or remote cooling.

WM - Water Manifold

**WM4003**

wm4003\_mcs

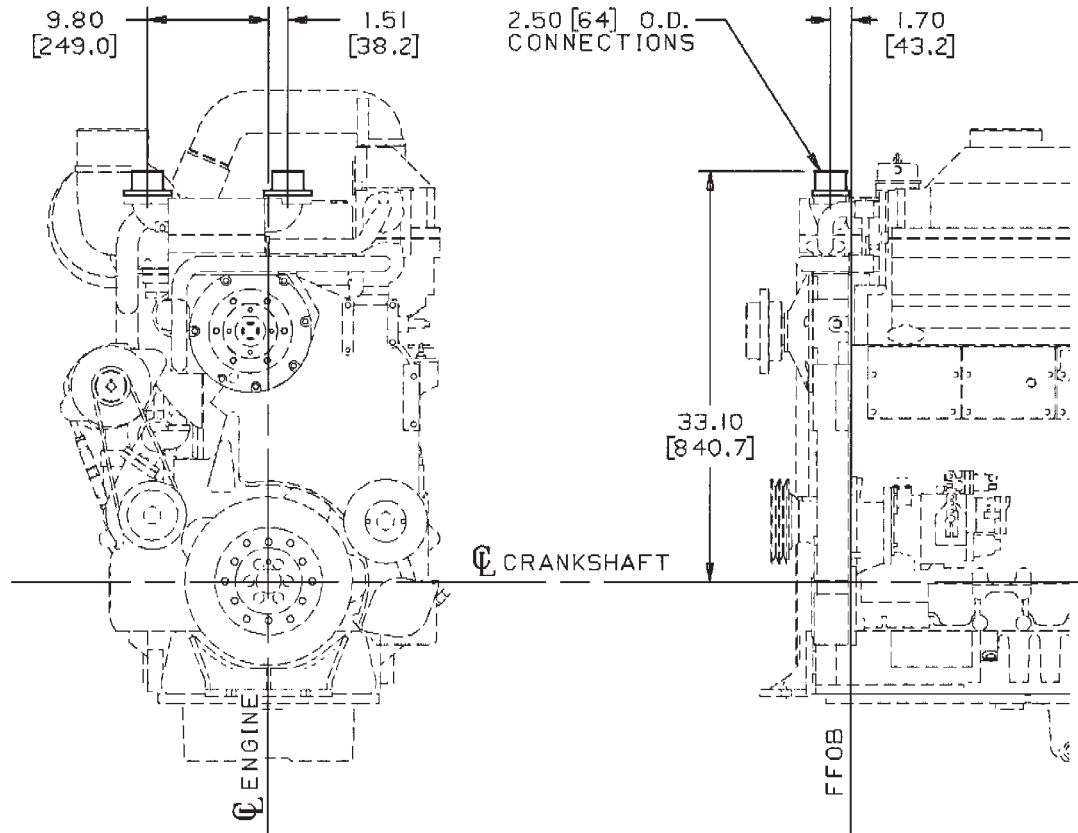
WM4003 [G]

Option #	Use With/Engine Type	Aftercooler Type
WM 4003	-	-

Water transfer tubes for dry exhaust gear cover plate design.

WO - Water Outlet Connection

**WO4002**



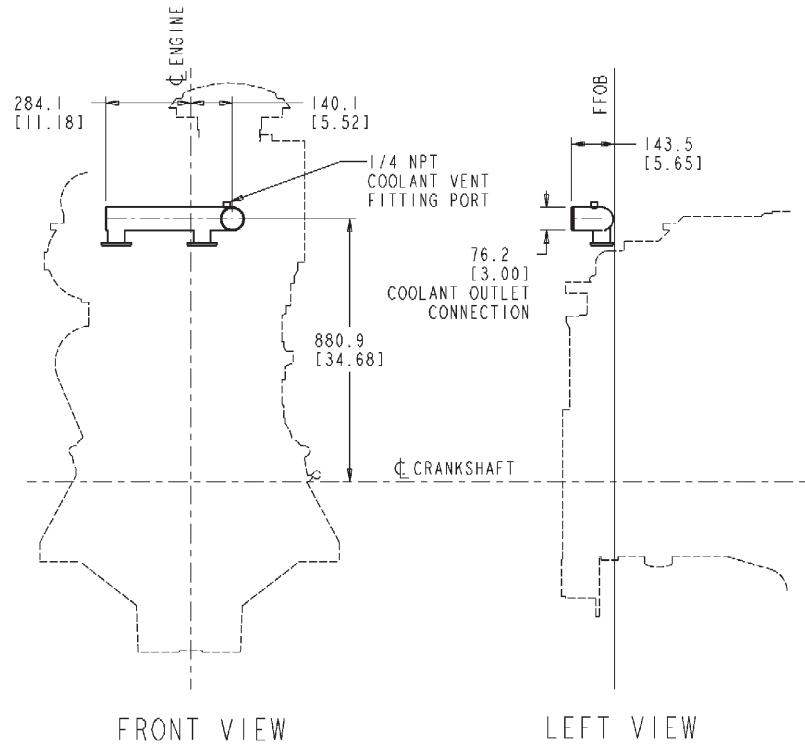
WO4002 [G]

Option #	Outlet O.D.	Orientation	Notes
WO 4002	64 mm [2.5 in.]	Straight up	-

Dual 64 mm [2.5 in.] water connections pointing up.  
Does not include heat shields.

WO - Water Outlet Connection

**WO4008**



WO4008.MCS

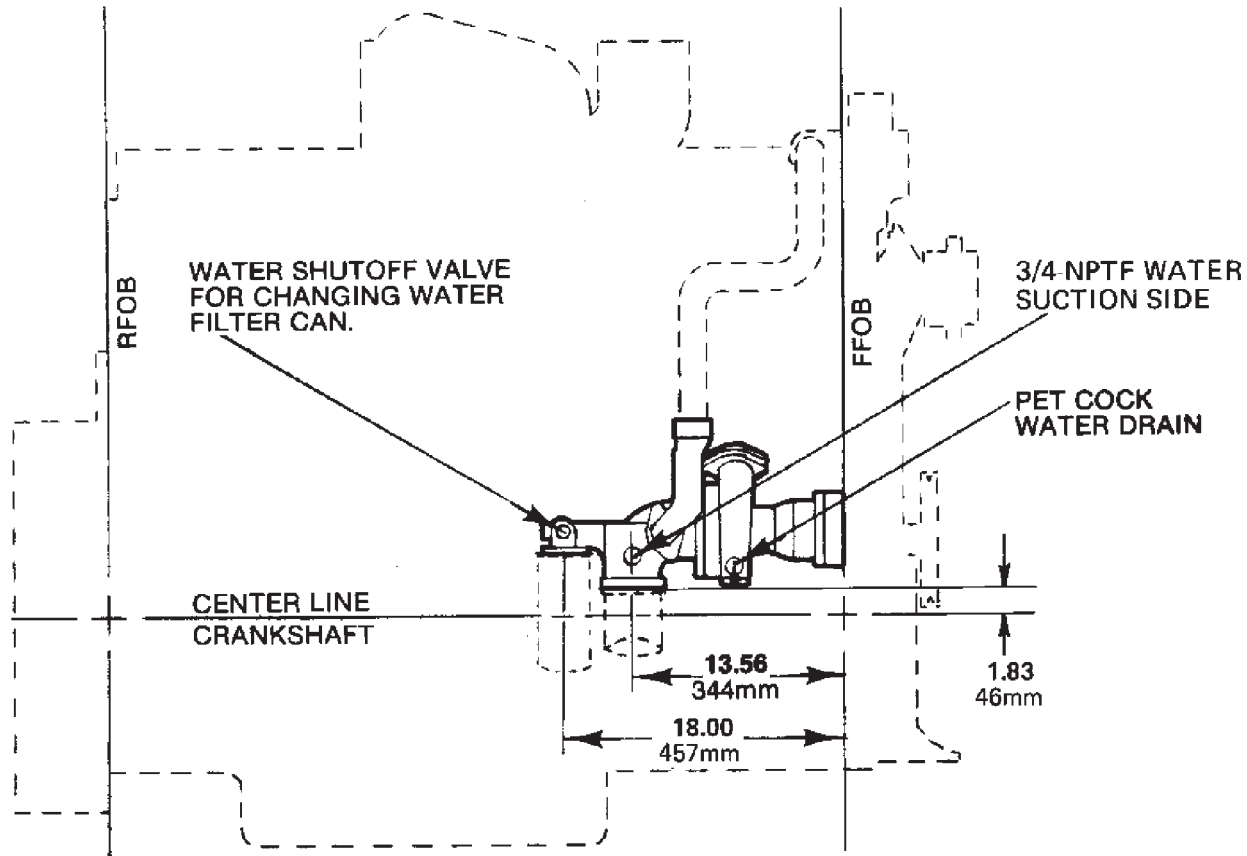
**WO4008 [G]**

Option #	Outlet O.D.	Orientation	Notes	Weight	Value Code
WO 4008	76.2 mm [3 in.]	Forward	-	-	-

76.2 mm [3 in.] water outlet connection pointing forward.  
For use with heat exchanger or remote cooling.

WP - Water Pump

WP4009



WP4009 [G]

Option #	Description	Notes	Weight	Value Code
WP 4009	Water Pump	-	n/a	-

Water pump with provisions for pump mounted water filter.  
Gear cover plate design.

**XS - Exhaust Outlet Connection**

**XS4002**

xs4002\_mcs

**XS4002 [G]**

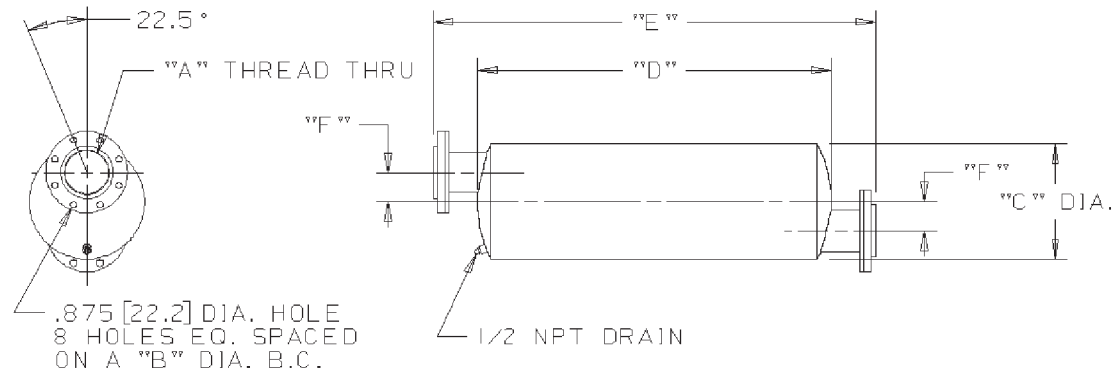
Option #	Description	Connection O.D.	Marmon Type	Notes
XS 4002	Exhaust Outlet Connection	127 mm [5 in.]	-	-

5 in. O.D. 90 degree Turbocharger Exhaust Elbow. 5 in. piping.

XS - Exhaust Silencers

**XS8028**

OPT. NO.	A	B	C	D	E	F
XS 8096	5 NPT	8.50 [215.9]	12.12 [307.8]	32.00 [812.8]	41.12 [1044.4]	2.80 [71.1]
XS 8097	5 NPT	8.50 [215.9]	14.12 [358.6]	43.40 [1102.3]	54.52 [1384.8]	3.60 [91.4]
XS 8098	6 NPT	9.50 [241.3]	14.12 [358.6]	32.80 [833.1]	41.77 [1061.0]	3.40 [86.4]
XS 8099	6 NPT	9.50 [241.3]	14.12 [358.6]	57.40 [1457.9]	68.77 [1746.8]	3.60 [91.4]



XS8028 [G]

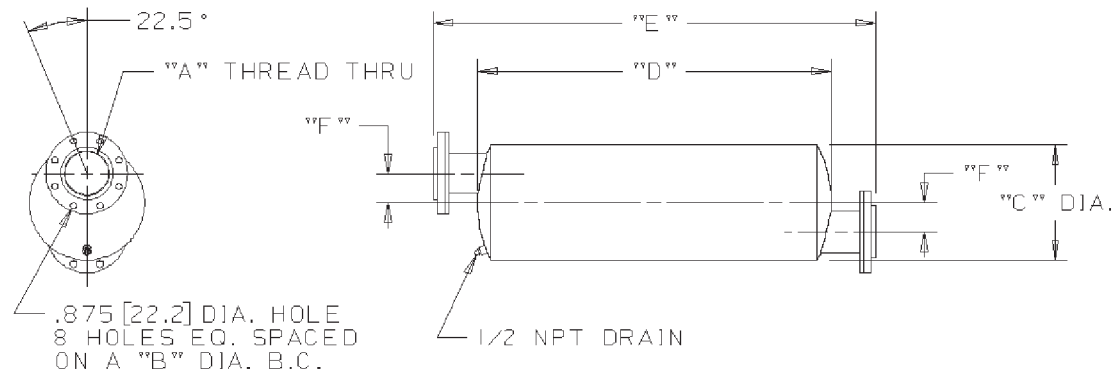
Option #	Description	Connection O.D.	Marmon Type	Notes
XS 8028	Exhaust Silence	-	-	-

5 in. 90 deg. flanged turbocharger exhaust elbow.

XS - Exhaust Silencers

**XS8029**

OPT. NO.	A	B	C	D	E	F
XS 8096	5 NPT	8.50 [215.9]	12.12 [307.8]	32.00 [812.8]	41.12 [1044.4]	2.80 [71.1]
XS 8097	5 NPT	8.50 [215.9]	14.12 [358.6]	43.40 [1102.3]	54.52 [1384.8]	3.60 [91.4]
XS 8098	6 NPT	9.50 [241.3]	14.12 [358.6]	32.80 [833.1]	41.77 [1061.0]	3.40 [86.4]
XS 8099	6 NPT	9.50 [241.3]	14.12 [358.6]	57.40 [1457.9]	68.77 [1746.8]	3.60 [91.4]



XS8029 [G]

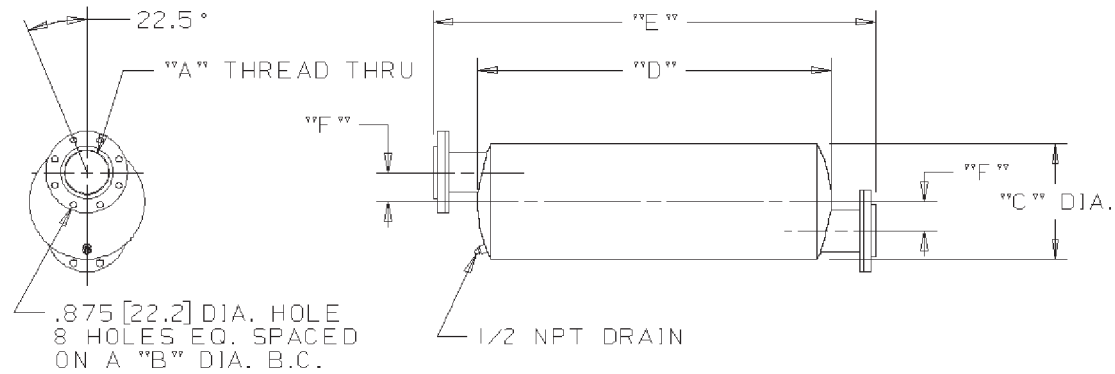
Option #	Description	Connection O.D.	Marmon Type	Notes
XS 8029	Exhaust Silence	-	-	-

5 in. I.D. 24 in. long flanged flexible exhaust tubing with outlet flange drilled to 125 lb. 5 in. nominal ASA pipe flange standard. Includes gasket for inlet flange.

XS - Exhaust Silencers

**XS8098**

OPT. NO.	A	B	C	D	E	F
XS 8096	5 NPT	8.50 [215.9]	12.12 [307.8]	32.00 [812.8]	41.12 [1044.4]	2.80 [71.1]
XS 8097	5 NPT	8.50 [215.9]	14.12 [358.6]	43.40 [1102.3]	54.52 [1384.8]	3.60 [91.4]
XS 8098	6 NPT	9.50 [241.3]	14.12 [358.6]	32.80 [833.1]	41.77 [1061.0]	3.40 [86.4]
XS 8099	6 NPT	9.50 [241.3]	14.12 [358.6]	57.40 [1457.9]	68.77 [1746.8]	3.60 [91.4]



XS8098 [G]

Option #	Description	Connection O.D.	Marmon Type	Notes
XS 8098	Exhaust Silence	-	-	-

Single industrial exhaust silencer. Nelson Model 411 with 6 in. flanged connections drilled to 125 pound nominal ASA pipe flange standard. Includes 2 gaskets and 2 companion flanges with 6 in. NPT Internal thread. Supplied in the kit.